

## Anti-PIK3CG antibody

<b>Cat. No.</b>	ml262051
<b>Package</b>	25 µl/100 µl/200 µl
<b>Storage</b>	-20°C, pH7.4 PBS, 0.05% NaN <sub>3</sub> , 40% Glycerol

### Product overview

<b>Description</b>	Anti-PIK3CG rabbit polyclonal antibody
<b>Applications</b>	ELISA, IHC
<b>Immunogen</b>	Synthetic peptide of human PIK3CG
<b>Reactivity</b>	Human, Mouse
<b>Content</b>	0.4 mg/ml
<b>Host species</b>	Rabbit
<b>Ig class</b>	Immunogen-specific rabbit IgG
<b>Purification</b>	Antigen affinity purification

### Target information

<b>Symbol</b>	PIK3CG
<b>Full name</b>	phosphatidylinositol-4,5-bisphosphate 3-kinase, catalytic subunit gamma
<b>Synonyms</b>	PI3K; PIK3; PI3CG; PI3Kgamma; p110gamma; p120-PI3K
<b>Swissprot</b>	P48736

### Target Background

This gene encodes a protein that belongs to the pi3/pi4-kinase family of proteins. The gene product is an enzyme that phosphorylates phosphoinositides on the 3-hydroxyl group of the inositol ring. It is an important modulator of extracellular signals, including those elicited by E-cadherin-mediated cell-cell adhesion, which plays an important role in maintenance of the structural and functional integrity of epithelia. In addition to its role in promoting assembly of adherens junctions, the protein is thought to play a pivotal role in the regulation of cytotoxicity in NK cells.

订购热线: 4008-898-798

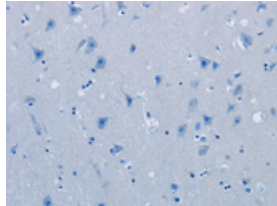
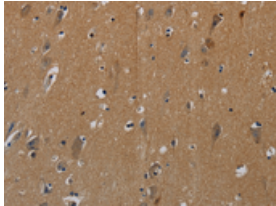
#### Applications

##### Immunohistochemistry

Predicted cell location: Cytoplasm

Positive control: Human brain

Recommended dilution: 50-200

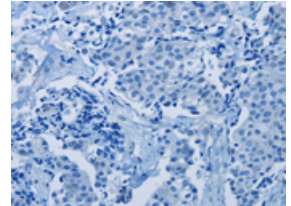
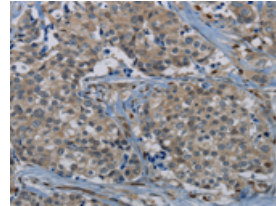


The image on the left is immunohistochemistry of paraffin-embedded Human brain tissue using ml262051(PIK3CG Antibody) at dilution 1/50, on the right is treated with synthetic peptide. (Original magnification:  $\times 200$ )

Predicted cell location: Cytoplasm

Positive control: Human breast cancer

Recommended dilution: 50-200



The image on the left is immunohistochemistry of paraffin-embedded Human breast cancer tissue using ml262051(PIK3CG Antibody) at dilution 1/50, on the right is treated with synthetic peptide. (Original magnification:  $\times 200$ )

##### ELISA

Recommended dilution: 2000-5000

联系电话: 4008-898-798, 021-61725725

联系QQ: 2881505695, 2881505696

邮箱: [mlbio\\_cn@yeah.net](mailto:mlbio_cn@yeah.net)

网址: [www.mlbio.cn](http://www.mlbio.cn)