

Anti-PLCL1 antibody

Cat. No.	ml262058
Package	25 µl/100 µl/200 µl
Storage	-20°C, pH7.4 PBS, 0.05% NaN ₃ , 40% Glycerol

Product overview

Description	Anti-PLCL1 rabbit polyclonal antibody
Applications	ELISA, IHC
Immunogen	Synthetic peptide of human PLCL1
Reactivity	Human
Content	0.3 mg/ml
Host species	Rabbit
Ig class	Immunogen-specific rabbit IgG
Purification	Antigen affinity purification

Target information

Symbol	PLCL1
Full name	phospholipase C-like 1
Synonyms	PLCE; PLCL; PRIP; PLDL1; PPP1R127
Swissprot	Q15111

Target Background

PLC-L (for PLC-deleted in lung carcinoma) is a PLC family member, the expression of which is decreased in small cell lung carcinomas. PLC-L is normally expressed in a variety of fetal and adult organs including the lung. PLC-L is thought to be involved in inositol phospholipid-based intracellular signaling cascade and aberrant expression of PLC-L may contribute to the genesis or progression of human lung carcinoma.

订购热线: 4008-898-798

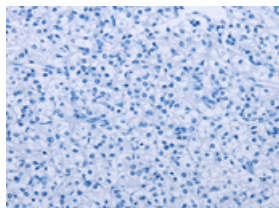
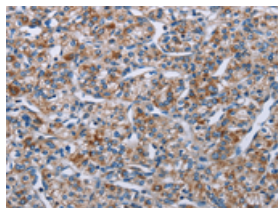
Applications

Immunohistochemistry

Predicted cell location: Cytoplasm

Positive control: Human prostate cancer

Recommended dilution: 25-100



The image on the left is immunohistochemistry of paraffin-embedded Human prostate cancer tissue using ml262058(PLCL1 Antibody) at dilution 1/40, on the right is treated with synthetic peptide. (Original magnification: $\times 200$)

ELISA

Recommended dilution: 1000-2000

联系电话: 4008-898-798, 021-61725725

联系QQ: 2881505695, 2881505696

邮箱: mlbio_cn@yeah.net

网址: www.mlbio.cn