

## Anti-PLXNA4 antibody

|                 |   |
|-----------------|---|
| <b>Cat. No.</b> | ml262063  |
| <b>Package</b>  | 25 µl/100 µl/200 µl                                     |
| <b>Storage</b>  | -20°C, pH7.4 PBS, 0.05% NaN <sub>3</sub> , 40% Glycerol |

### Product overview

|                     |  |
|---------------------|--|
| <b>Description</b>  | Anti-PLXNA4 rabbit polyclonal antibody |
| <b>Applications</b> | ELISA, IHC                             |
| <b>Immunogen</b>    | Synthetic peptide of human PLXNA4      |
| <b>Reactivity</b>   | Human, Mouse                           |
| <b>Content</b>      | 0.6 mg/ml                              |
| <b>Host species</b> | Rabbit                                 |
| <b>Ig class</b>     | Immunogen-specific rabbit IgG          |
| <b>Purification</b> | Antigen affinity purification          |

### Target information

|                  |  |
|------------------|--|
| <b>Symbol</b>    | PLXNA4                                       |
| <b>Full name</b> | plexin A4                                    |
| <b>Synonyms</b>  | PLEXA4; PLXNA4A; PLXNA4B; FAYV2820; PRO34003 |
| <b>Swissprot</b> | Q9HCM2                                       |

### Target Background

Coreceptor for SEMA3A. Necessary for signaling by class 3 semaphorins and subsequent remodeling of the cytoskeleton. Plays a role in axon guidance in the developing nervous system. Class 3 semaphorins bind to a complex composed of a neuropilin and a plexin. The plexin modulates the affinity of the complex for specific semaphorins, and its cytoplasmic domain is required for the activation of down-stream signaling events in the cytoplasm.

订购热线: 4008-898-798

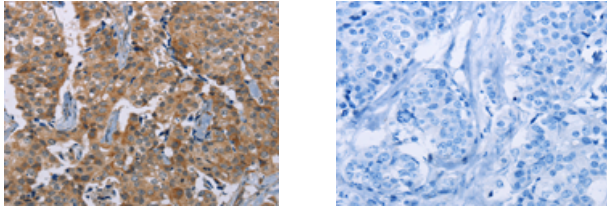
#### Applications

##### Immunohistochemistry

Predicted cell location: Cytoplasm

Positive control: Human breast cancer

Recommended dilution: 50-200



The image on the left is immunohistochemistry of paraffin-embedded Human breast cancer tissue using ml262063(PLXNA4 Antibody) at dilution 1/50, on the right is treated with synthetic peptide. (Original magnification:  $\times 200$ )

##### ELISA

Recommended dilution: 2000-5000

联系电话: 4008-898-798, 021-61725725

联系QQ: 2881505695, 2881505696

邮箱: [mlbio\\_cn@yeah.net](mailto:mlbio_cn@yeah.net)

网址: [www.mlbio.cn](http://www.mlbio.cn)