

Anti-SAMD9L antibody

Cat. No.	ml262155
Package	25 µl/100 µl/200 µl
Storage	-20°C, pH7.4 PBS, 0.05% NaN ₃ , 40% Glycerol

Product overview

Description	Anti-SAMD9L rabbit polyclonal antibody
Applications	ELISA, IHC
Immunogen	Synthetic peptide of human SAMD9L
Reactivity	Human
Content	0.5 mg/ml
Host species	Rabbit
Ig class	Immunogen-specific rabbit IgG
Purification	Antigen affinity purification

Target information

Symbol	SAMD9L
Full name	sterile alpha motif domain containing 9-like
Synonyms	UEF1; DRIF2; C7orf6
Swissprot	Q8IVG5

Target Background

The deduced protein contains an N-terminal SAM domain. Database analysis indicated that SAMD9L can undergo alternative splicing leading to an alternative coding region. PCR analysis detected SAMD9L in all adult and fetal human tissues examined except some tumor tissues. Orthologs of SAMD9L were detected in all mammals examined but not in chicken, frog, or fish species. Widely expressed in adult and fetal tissues. Variable expression in tumors. Down-regulated in breast cancer.

订购热线: 4008-898-798

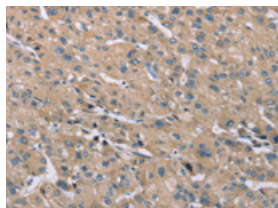
Applications

Immunohistochemistry

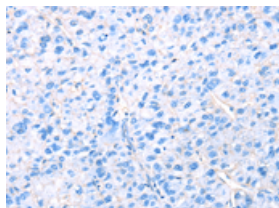
Predicted cell location: Cytoplasm

Positive control: Human liver cancer

Recommended dilution: 25-100



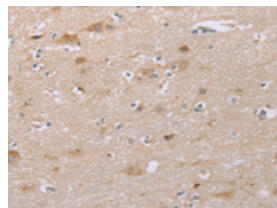
The image on the left is immunohistochemistry of paraffin-embedded Human liver cancer tissue using ml262155(SAMD9L Antibody) at dilution 1/30, on the right is treated with synthetic peptide. (Original magnification: $\times 200$)



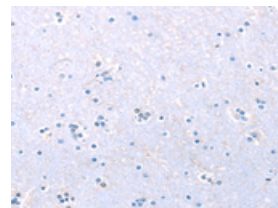
Predicted cell location: Cytoplasm

Positive control: Human brain

Recommended dilution: 25-100



The image on the left is immunohistochemistry of paraffin-embedded Human brain tissue using ml262155(SAMD9L Antibody) at dilution 1/30, on the right is treated with synthetic peptide. (Original magnification: $\times 200$)



ELISA

Recommended dilution: 1000-2000

联系电话: 4008-898-798, 021-61725725

联系QQ: 2881505695, 2881505696

邮箱: mlbio_cn@yeah.net

网址: www.mlbio.cn