

Anti-SEZ6L antibody

Cat. No.	ml262196
Package	25 µl/100 µl/200 µl
Storage	-20°C, pH7.4 PBS, 0.05% NaN ₃ , 40% Glycerol

Product overview

Description	Anti-SEZ6L rabbit polyclonal antibody
Applications	ELISA, IHC
Immunogen	Synthetic peptide of human SEZ6L
Reactivity	Human, Mouse
Content	0.7 mg/ml
Host species	Rabbit
Ig class	Immunogen-specific rabbit IgG
Purification	Antigen affinity purification

Target information

Symbol	SEZ6L
Full name	seizure related 6 homolog (mouse)-like
Synonyms	
Swissprot	Q9BYH1

Target Background

SEZ6L (seizure related 6 homolog-like) is a 1,024 amino acid single-pass type I membrane protein that localizes to the endoplasmic reticulum. Widely expressed, SEZ6L is a candidate tumor suppressor gene and may contribute to specialized endoplasmic reticulum functions in neurons. SEZ6L contains three CUB domains and five sushi (CCP/SCR) domains, which may be involved in protein-protein interactions and signal transduction. The gene encoding SEZ6L is located on human chromosome 22, which houses over 500 genes and is the second smallest human chromosome. Mutations in several of the genes that map to chromosome 22 are involved in the development of Phelan-McDermid syndrome, Neurofibromatosis type 2, autism and schizophrenia.

订购热线: 4008-898-798

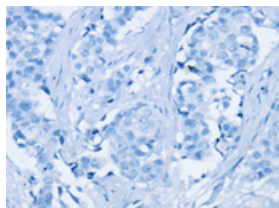
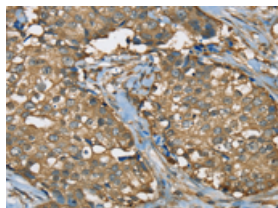
Applications

Immunohistochemistry

Predicted cell location: Cytoplasm

Positive control: Human breast cancer

Recommended dilution: 25-100

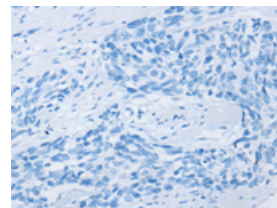
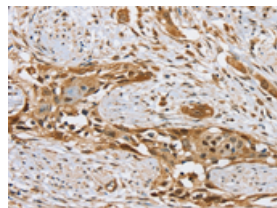


The image on the left is immunohistochemistry of paraffin-embedded Human breast cancer tissue using ml262196(SEZ6L Antibody) at dilution 1/35, on the right is treated with synthetic peptide. (Original magnification: $\times 200$)

Predicted cell location: Cytoplasm

Positive control: Human esophagus cancer

Recommended dilution: 25-100



The image on the left is immunohistochemistry of paraffin-embedded Human esophagus cancer tissue using ml262196(SEZ6L Antibody) at dilution 1/35, on the right is treated with synthetic peptide. (Original magnification: $\times 200$)

ELISA

Recommended dilution: 1000-2000

联系电话: 4008-898-798, 021-61725725

联系QQ: 2881505695, 2881505696

邮箱: mlbio_cn@yeah.net

网址: www.mlbio.cn