

Anti-SLC26A5 antibody

Cat. No.	ml262227
Package	25 µl/100 µl/200 µl
Storage	-20°C, pH7.4 PBS, 0.05% NaN ₃ , 40% Glycerol

Product overview

Description	Anti-SLC26A5 rabbit polyclonal antibody
Applications	ELISA, IHC
Immunogen	Synthetic peptide of human SLC26A5
Reactivity	Human, Mouse, Rat
Content	0.4 mg/ml
Host species	Rabbit
Ig class	Immunogen-specific rabbit IgG
Purification	Antigen affinity purification

Target information

Symbol	SLC26A5
Full name	solute carrier family 26 (anion exchanger), member 5
Synonyms	PRES; DFNB61
Swissprot	P58743

Target Background

This gene encodes a member of the SLC26A/SuP transporter family. The protein functions as a molecular motor in motile outer hair cells (OHCs) of the cochlea, inducing changes in cell length that act to amplify sound levels. The transmembrane protein is an incomplete anion transporter, and does not allow anions to cross the cell membrane but instead undergoes a conformational change in response to changes in intracellular Cl⁻ levels that results in a change in cell length.

订购热线: 4008-898-798

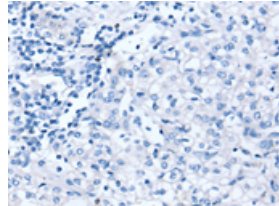
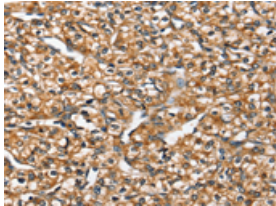
Applications

Immunohistochemistry

Predicted cell location: Cytoplasm or Cell membrane

Positive control: Human prostate cancer

Recommended dilution: 25-100



The image on the left is immunohistochemistry of paraffin-embedded Human prostate cancer tissue using ml262227(SLC26A5 Antibody) at dilution 1/20, on the right is treated with synthetic peptide. (Original magnification: $\times 200$)

ELISA

Recommended dilution: 1000-2000

联系电话: 4008-898-798, 021-61725725

联系QQ: 2881505695, 2881505696

邮箱: mlbio_cn@yeah.net

网址: www.mlbio.cn