

## Anti-SLC34A3 antibody

|                 |   |
|-----------------|---|
| <b>Cat. No.</b> | ml262233  |
| <b>Package</b>  | 25 µl/100 µl/200 µl                                     |
| <b>Storage</b>  | -20°C, pH7.4 PBS, 0.05% NaN <sub>3</sub> , 40% Glycerol |

### Product overview

|                     |   |
|---------------------|---|
| <b>Description</b>  | Anti-SLC34A3 rabbit polyclonal antibody |
| <b>Applications</b> | ELISA, IHC                              |
| <b>Immunogen</b>    | Synthetic peptide of human SLC34A3      |
| <b>Reactivity</b>   | Human                                   |
| <b>Content</b>      | 0.5 mg/ml                               |
| <b>Host species</b> | Rabbit                                  |
| <b>Ig class</b>     | Immunogen-specific rabbit IgG           |
| <b>Purification</b> | Antigen affinity purification           |

### Target information

|                  |   |
|------------------|---|
| <b>Symbol</b>    | SLC34A3   |
| <b>Full name</b> | solute carrier family 34 (type II sodium/phosphate cotransporter), member 3 |
| <b>Synonyms</b>  | HHRH; NPTIIc  |
| <b>Swissprot</b> | Q8N130  |

### Target Background

This gene encodes a member of SLC34A transporter family of proteins, and is expressed primarily in the kidney. It is involved in transporting phosphate into cells via sodium cotransport in the renal brush border membrane, and contributes to the maintenance of inorganic phosphate concentration in the kidney. Mutations in this gene are associated with hereditary hypophosphatemic rickets with hypercalciuria. Alternatively spliced transcript variants varying in the 5' UTR have been found for this gene.

订购热线: 4008-898-798

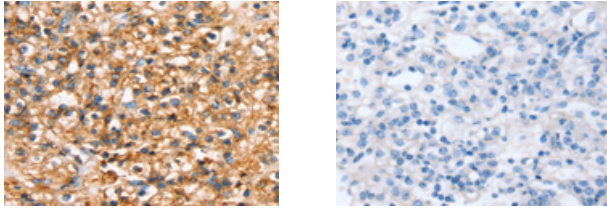
#### Applications

##### Immunohistochemistry

Predicted cell location: Cytoplasm or Cell membrane

Positive control: Human prostate cancer

Recommended dilution: 25-100



The image on the left is immunohistochemistry of paraffin-embedded Human prostate cancer tissue using ml262233(SLC34A3 Antibody) at dilution 1/20, on the right is treated with synthetic peptide. (Original magnification:  $\times 200$ )

##### ELISA

Recommended dilution: 1000-2000

联系电话: 4008-898-798, 021-61725725

联系QQ: 2881505695, 2881505696

邮箱: [mlbio\\_cn@yeah.net](mailto:mlbio_cn@yeah.net)

网址: [www.mlbio.cn](http://www.mlbio.cn)