

Anti-SLC39A3 antibody

Cat. No.	ml262236
Package	25 µl/100 µl/200 µl
Storage	-20°C, pH7.4 PBS, 0.05% NaN ₃ , 40% Glycerol

Product overview

Description	Anti-SLC39A3 rabbit polyclonal antibody
Applications	ELISA, IHC
Immunogen	Synthetic peptide of human SLC39A3
Reactivity	Human, Mouse, Rat
Content	0.6 mg/ml
Host species	Rabbit
Ig class	Immunogen-specific rabbit IgG
Purification	Antigen affinity purification

Target information

Symbol	SLC39A3
Full name	solute carrier family 39 (zinc transporter), member 3
Synonyms	ZIP3; ZIP-3
Swissprot	Q9BRY0

Target Background

SLC39A3 (solute carrier family 39, member 2), is a 314 amino acid acid multi-pass membrane protein that localizes to the cell membrane and belongs to the ZIP family of zinc transporters. Two isoforms of ZIP3 exist as a result of alternative splicing events. ZIP3 is involved in translocation of extracellular zinc into a variety of cell types. Tumorigenic prostate epithelial cells contain less intracellular zinc than non-tumorigenic prostate epithelial cells. Loss of the ability to maintain zinc accumulation may be caused by the decrease in the ZIP1 protein expression and the intracellular redistribution of ZIP3.

订购热线: 4008-898-798

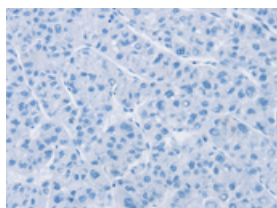
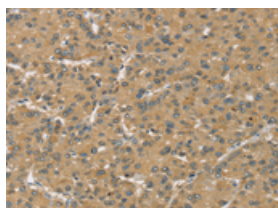
Applications

Immunohistochemistry

Predicted cell location: Cytoplasm

Positive control: Human liver cancer

Recommended dilution: 25-100

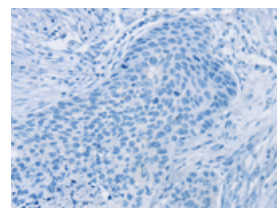
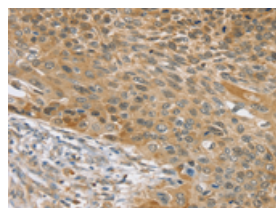


The image on the left is immunohistochemistry of paraffin-embedded Human liver cancer tissue using ml262236(SLC39A3 Antibody) at dilution 1/30, on the right is treated with synthetic peptide. (Original magnification: ×200)

Predicted cell location: Cytoplasm

Positive control: Human esophagus cancer

Recommended dilution: 25-100



The image on the left is immunohistochemistry of paraffin-embedded Human esophagus cancer tissue using ml262236(SLC39A3 Antibody) at dilution 1/30, on the right is treated with synthetic peptide. (Original magnification: ×200)

ELISA

Recommended dilution: 1000-2000

联系电话: 4008-898-798, 021-61725725

联系QQ: 2881505695, 2881505696

邮箱: mlbio_cn@yeah.net

网址: www.mlbio.cn