

Anti-SLC6A19 antibody

Cat. No.	ml262254
Package	25 µl/100 µl/200 µl
Storage	-20°C, pH7.4 PBS, 0.05% NaN ₃ , 40% Glycerol

Product overview

Description	Anti-SLC6A19 rabbit polyclonal antibody
Applications	ELISA, IHC
Immunogen	Synthetic peptide of human SLC6A19
Reactivity	Human
Content	0.9 mg/ml
Host species	Rabbit
Ig class	Immunogen-specific rabbit IgG
Purification	Antigen affinity purification

Target information

Symbol	SLC6A19
Full name	solute carrier family 6 (neutral amino acid transporter), member 19
Synonyms	HND; B0AT1
Swissprot	Q695T7

Target Background

This gene encodes a system B(0) transmembrane protein that actively transports most neutral amino acids across the apical membrane of epithelial cells. Mutations in this gene result in Hartnup disorder.

订购热线: 4008-898-798

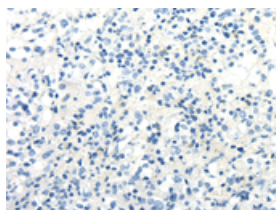
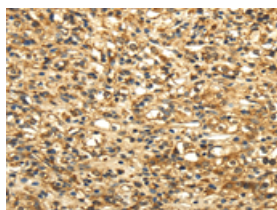
Applications

Immunohistochemistry

Predicted cell location: Cell membrane

Positive control: Human prostate cancer

Recommended dilution: 30-150

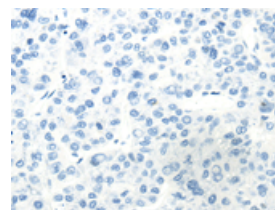
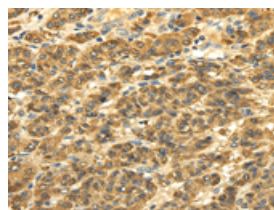


The image on the left is immunohistochemistry of paraffin-embedded Human prostate cancer tissue using ml262254(SLC6A19 Antibody) at dilution 1/35, on the right is treated with synthetic peptide. (Original magnification: $\times 200$)

Predicted cell location: Cell membrane

Positive control: Human liver cancer

Recommended dilution: 30-150



The image on the left is immunohistochemistry of paraffin-embedded Human liver cancer tissue using ml262254(SLC6A19 Antibody) at dilution 1/35, on the right is treated with synthetic peptide. (Original magnification: $\times 200$)

ELISA

Recommended dilution: 2000-10000

联系电话: 4008-898-798, 021-61725725

联系QQ: 2881505695, 2881505696

邮箱: mlbio_cn@yeah.net

网址: www.mlbio.cn