

## Anti-SLTM antibody

<b>Cat. No.</b>	ml262269
<b>Package</b>	25 µl/100 µl/200 µl
<b>Storage</b>	-20°C, pH7.4 PBS, 0.05% NaN <sub>3</sub> , 40% Glycerol

### Product overview

<b>Description</b>	Anti-SLTM rabbit polyclonal antibody
<b>Applications</b>	ELISA, IHC
<b>Immunogen</b>	Synthetic peptide of human SLTM
<b>Reactivity</b>	Human, Mouse
<b>Content</b>	0.9 mg/ml
<b>Host species</b>	Rabbit
<b>Ig class</b>	Immunogen-specific rabbit IgG
<b>Purification</b>	Antigen affinity purification

### Target information

<b>Symbol</b>	SLTM
<b>Full name</b>	SAFB-like, transcription modulator
<b>Synonyms</b>	Met
<b>Swissprot</b>	Q9NWH9

### Target Background

SLTM (SAFB-like, transcription modulator), also known as MET (modulator of estrogen-induced transcription), is a 1,034 amino acid protein that localizes to punctate structures within the nucleus and contains one SAP domain and one RNA recognition motif. When expressed at high levels, SLTM functions to inhibit transcription and may, ultimately, lead to apoptosis. Multiple isoforms of SLTM exist due to alternative splicing events. The gene encoding SLTM maps to human chromosome 15, which houses over 700 genes and comprises nearly 3% of the human genome.

订购热线: 4008-898-798

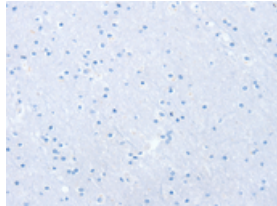
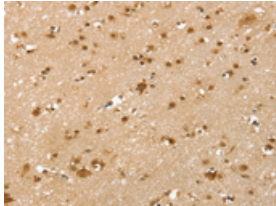
#### Applications

##### Immunohistochemistry

Predicted cell location: Nucleus

Positive control: Human brain

Recommended dilution: 25-100



The image on the left is immunohistochemistry of paraffin-embedded Human brain tissue using ml262269(SLTM Antibody) at dilution 1/40, on the right is treated with synthetic peptide. (Original magnification:  $\times 200$ )

##### ELISA

Recommended dilution: 1000-2000

联系电话: 4008-898-798, 021-61725725

联系QQ: 2881505695, 2881505696

邮箱: [mlbio\\_cn@yeah.net](mailto:mlbio_cn@yeah.net)

网址: [www.mlbio.cn](http://www.mlbio.cn)