

Anti-SMC4 antibody

Cat. No.	ml262274
Package	25 µl/100 µl/200 µl
Storage	-20°C, pH7.4 PBS, 0.05% NaN ₃ , 40% Glycerol

Product overview

Description	Anti-SMC4 rabbit polyclonal antibody
Applications	ELISA, IHC
Immunogen	Synthetic peptide of human SMC4
Reactivity	Human, Mouse
Content	0.7 mg/ml
Host species	Rabbit
Ig class	Immunogen-specific rabbit IgG
Purification	Antigen affinity purification

Target information

Symbol	SMC4
Full name	structural maintenance of chromosomes 4
Synonyms	CAPC; CAP-C; SMC-4; SMC4L1; hCAP-C
Swissprot	Q9NTJ3

Target Background

Members of the structural maintenance of chromosomes, or SMC, family (e.g., SMC1A; MIM 300040) are critical for mitotic chromosome condensation in frogs and for DNA repair in mammals.

订购热线: 4008-898-798

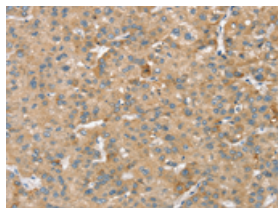
Applications

Immunohistochemistry

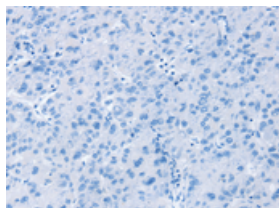
Predicted cell location: Cytoplasm

Positive control: Human liver cancer

Recommended dilution: 25-100



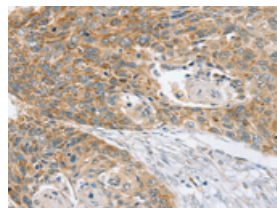
The image on the left is immunohistochemistry of paraffin-embedded Human liver cancer tissue using ml262274(SMC4 Antibody) at dilution 1/40, on the right is treated with synthetic peptide. (Original magnification: $\times 200$)



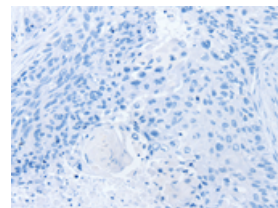
Predicted cell location: Cytoplasm

Positive control: Human esophagus cancer

Recommended dilution: 25-100



The image on the left is immunohistochemistry of paraffin-embedded Human esophagus cancer tissue using ml262274(SMC4 Antibody) at dilution 1/40, on the right is treated with synthetic peptide. (Original magnification: $\times 200$)



ELISA

Recommended dilution: 1000-2000

联系电话: 4008-898-798, 021-61725725

联系QQ: 2881505695, 2881505696

邮箱: mlbio_cn@yeah.net

网址: www.mlbio.cn