

Anti-STK32C antibody

Cat. No.	ml262316
Package	25 µl/100 µl/200 µl
Storage	-20°C, pH7.4 PBS, 0.05% NaN ₃ , 40% Glycerol

Product overview

Description	Anti-STK32C rabbit polyclonal antibody
Applications	ELISA, IHC
Immunogen	Synthetic peptide of human STK32C
Reactivity	Human, Mouse
Content	0.3 mg/ml
Host species	Rabbit
Ig class	Immunogen-specific rabbit IgG
Purification	Antigen affinity purification

Target information

Symbol	STK32C
Full name	serine/threonine kinase 32C
Synonyms	PKE; YANK3
Swissprot	Q86UX6

Target Background

The protein encoded by this gene is a member of the serine/threonine protein kinase family. The specific function of this kinase is not known.

订购热线: 4008-898-798

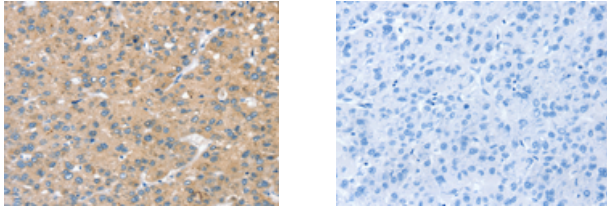
Applications

Immunohistochemistry

Predicted cell location: Cytoplasm

Positive control: Human liver cancer

Recommended dilution: 20-100



The image on the left is immunohistochemistry of paraffin-embedded Human liver cancer tissue using ml262316(STK32C Antibody) at dilution 1/20, on the right is treated with synthetic peptide. (Original magnification: $\times 200$)

ELISA

Recommended dilution: 1000-2000

联系电话: 4008-898-798, 021-61725725

联系QQ: 2881505695, 2881505696

邮箱: mlbio_cn@yeah.net

网址: www.mlbio.cn