

Anti-TMSB10 antibody

Cat. No.	ml262332
Package	25 µl/100 µl/200 µl
Storage	-20°C, pH7.4 PBS, 0.05% NaN ₃ , 40% Glycerol

Product overview

Description	Anti-TMSB10 rabbit polyclonal antibody
Applications	ELISA, IHC
Immunogen	Synthetic peptide of human TMSB10
Reactivity	Human, Mouse, Rat
Content	0.6 mg/ml
Host species	Rabbit
Ig class	Immunogen-specific rabbit IgG
Purification	Antigen affinity purification

Target information

Symbol	TMSB10
Full name	thymosin beta 10
Synonyms	TB10; MIG12
Swissprot	P63313

Target Background

Thymosin beta-10 plays an important role in the organization of the cytoskeleton. Thymosin beta-10 binds to and sequesters actin monomers (G actin) and therefore inhibits actin polymerization. The expression of thymosin beta-10 dramatically decreases after birth.

订购热线: 4008-898-798

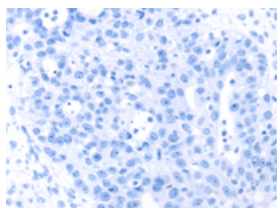
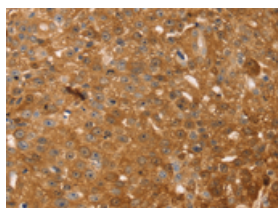
Applications

Immunohistochemistry

Predicted cell location: Cytoplasm

Positive control: Human breast cancer

Recommended dilution: 30-150

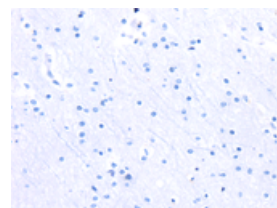
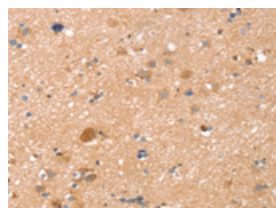


The image on the left is immunohistochemistry of paraffin-embedded Human breast cancer tissue using ml262332(TMSB10 Antibody) at dilution 1/35, on the right is treated with synthetic peptide. (Original magnification: $\times 200$)

Predicted cell location: Cytoplasm

Positive control: Human brain

Recommended dilution: 30-150



The image on the left is immunohistochemistry of paraffin-embedded Human brain tissue using ml262332(TMSB10 Antibody) at dilution 1/35, on the right is treated with synthetic peptide. (Original magnification: $\times 200$)

ELISA

Recommended dilution: 2000-10000

联系电话: 4008-898-798, 021-61725725

联系QQ: 2881505695, 2881505696

邮箱: mlbio_cn@yeah.net

网址: www.mlbio.cn