

Anti-TBC1D4 antibody

Cat. No.	ml262341
Package	25 µl/100 µl/200 µl
Storage	-20°C, pH7.4 PBS, 0.05% NaN ₃ , 40% Glycerol

Product overview

Description	Anti-TBC1D4 rabbit polyclonal antibody
Applications	ELISA, IHC
Immunogen	Synthetic peptide of human TBC1D4
Reactivity	Human, Mouse
Content	0.5 mg/ml
Host species	Rabbit
Ig class	Immunogen-specific rabbit IgG
Purification	Antigen affinity purification

Target information

Symbol	TBC1D4
Full name	TBC1 domain family, member 4
Synonyms	AS160
Swissprot	O60343

Target Background

TBC1 domain family member 4 (TBC1D4), also designated AS160, can be insulin- and/or AKT1-induced. Insulin-stimulated phosphorylation is required for GLUT4 translocation. TBC1D4 may play a role as a GTPase activating protein for proteins in the Rab family. It is expressed primarily in skeletal muscle and heart, as well as spleen, lymph node and leukocytes. Defects in the TBC1D4 gene may cause atopic dermatitis (AD), sometimes referred to as eczema, an atopic chronic skin disease. The skin of affected individuals reacts to irritants or allergens and becomes red, flaky and itchy. The skin is also more vulnerable to inflammations, and symptoms can grow or disappear over time.

订购热线: 4008-898-798

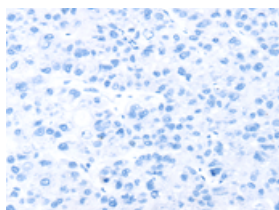
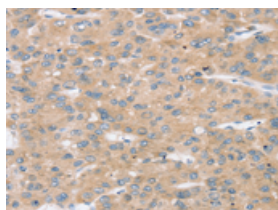
Applications

Immunohistochemistry

Predicted cell location: Cytoplasm and Cell membrane

Positive control: Human liver cancer

Recommended dilution: 25-100

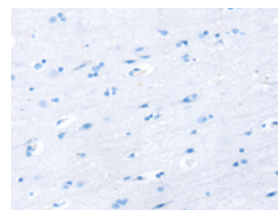
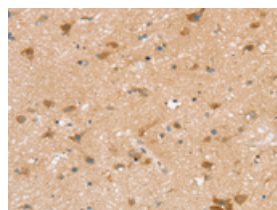


The image on the left is immunohistochemistry of paraffin-embedded Human liver cancer tissue using ml262341(TBC1D4 Antibody) at dilution 1/30, on the right is treated with synthetic peptide. (Original magnification: $\times 200$)

Predicted cell location: Cytoplasm and Cell membrane

Positive control: Human brain

Recommended dilution: 25-100



The image on the left is immunohistochemistry of paraffin-embedded Human brain tissue using ml262341(TBC1D4 Antibody) at dilution 1/30, on the right is treated with synthetic peptide. (Original magnification: $\times 200$)

ELISA

Recommended dilution: 2000-5000

联系电话: 4008-898-798, 021-61725725

联系QQ: 2881505695, 2881505696

邮箱: mlbio_cn@yeah.net

网址: www.mlbio.cn