

Anti-TMEFF2 antibody

Cat. No.	ml262378
Package	25 µl/100 µl/200 µl
Storage	-20°C, pH7.4 PBS, 0.05% NaN ₃ , 40% Glycerol

Product overview

Description	Anti-TMEFF2 rabbit polyclonal antibody
Applications	ELISA, IHC
Immunogen	Synthetic peptide of human TMEFF2
Reactivity	Human, Mouse
Content	0.8 mg/ml
Host species	Rabbit
Ig class	Immunogen-specific rabbit IgG
Purification	Antigen affinity purification

Target information

Symbol	TMEFF2
Full name	transmembrane protein with EGF-like and two follistatin-like domains 2
Synonyms	TR; HPP1; TPEF; TENB2; CT120.2
Swissprot	Q9UIK5

Target Background

TMEFF2 (transmembrane protein with EGF-like and two follistatin-like domains 2), a gene encoding a plasma membrane protein with two follistatin-like domains and one epidermal growth factor-like domain, had limited normal tissue distribution and was highly overexpressed in prostate cancer. The shedded form up-regulates cancer cell proliferation, probably by promoting ERK1/2 phosphorylation.

订购热线: 4008-898-798

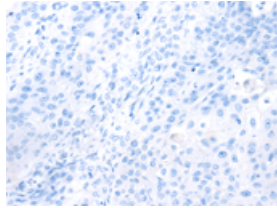
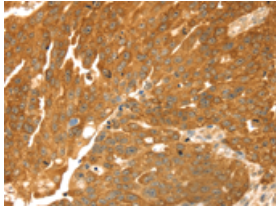
Applications

Immunohistochemistry

Predicted cell location: Cytoplasm

Positive control: Human breast cancer

Recommended dilution: 25-100



The image on the left is immunohistochemistry of paraffin-embedded Human breast cancer tissue using ml262378(TMEFF2 Antibody) at dilution 1/35, on the right is treated with synthetic peptide. (Original magnification: $\times 200$)

ELISA

Recommended dilution: 2000-5000

联系电话: 4008-898-798, 021-61725725

联系QQ: 2881505695, 2881505696

邮箱: mlbio_cn@yeah.net

网址: www.mlbio.cn