

Anti-TPST1 antibody

Cat. No.	ml262402
Package	25 µl/100 µl/200 µl
Storage	-20°C, pH7.4 PBS, 0.05% NaN ₃ , 40% Glycerol

Product overview

Description	Anti-TPST1 rabbit polyclonal antibody
Applications	ELISA, IHC
Immunogen	Synthetic peptide of human TPST1
Reactivity	Human, Mouse, Rat
Content	0.4 mg/ml
Host species	Rabbit
Ig class	Immunogen-specific rabbit IgG
Purification	Antigen affinity purification

Target information

Symbol	TPST1
Full name	tyrosylprotein sulfotransferase 1
Synonyms	TANGO13A
Swissprot	O60507

Target Background

Catalyzes the O-sulfation of tyrosine residues within acidic motifs of polypeptides.

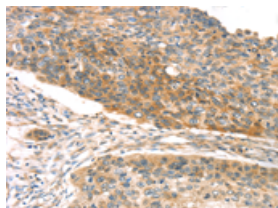
Applications

Immunohistochemistry

Predicted cell location: Cytoplasm and Cell membrane

Positive control: Human esophagus cancer

Recommended dilution: 20-100

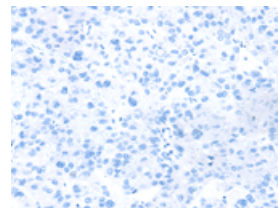
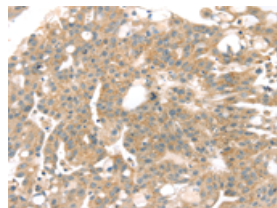


The image on the left is immunohistochemistry of paraffin-embedded Human esophagus cancer tissue using ml262402(TPST1 Antibody) at dilution 1/20, on the right is treated with synthetic peptide. (Original magnification: $\times 200$)

Predicted cell location: Cytoplasm and Cell membrane

Positive control: Human breast cancer

Recommended dilution: 20-100



The image on the left is immunohistochemistry of paraffin-embedded Human breast cancer tissue using ml262402(TPST1 Antibody) at dilution 1/20, on the right is treated with synthetic peptide. (Original magnification: $\times 200$)

ELISA

Recommended dilution: 2000-5000

联系电话: 4008-898-798, 021-61725725

联系QQ: 2881505695, 2881505696

邮箱: mlbio_cn@yeah.net

网址: www.mlbio.cn