

## Anti-ZNF106 antibody

<b>Cat. No.</b>	ml262645
<b>Package</b>	25 µl/100 µl/200 µl
<b>Storage</b>	-20°C, pH7.4 PBS, 0.05% NaN <sub>3</sub> , 40% Glycerol

### Product overview

<b>Description</b>	Anti-ZNF106 rabbit polyclonal antibody
<b>Applications</b>	ELISA, IHC
<b>Immunogen</b>	Synthetic peptide of human ZNF106
<b>Reactivity</b>	Human, Mouse
<b>Content</b>	0.4 mg/ml
<b>Host species</b>	Rabbit
<b>Ig class</b>	Immunogen-specific rabbit IgG
<b>Purification</b>	Antigen affinity purification

### Target information

<b>Symbol</b>	ZNF106
<b>Full name</b>	zinc finger protein 106
<b>Synonyms</b>	SH3BP3; ZFP106; ZNF474
<b>Swissprot</b>	Q9H2Y7

### Target Background

Zinc-finger proteins contain DNA-binding domains and have a wide variety of functions, most of which encompass some form of transcriptional activation or repression. The majority of zinc-finger proteins contain a Krüppel-type DNA binding domain and a KRAB domain, which is thought to interact with KAP1, thereby recruiting histone modifying proteins. ZFP106 (Zinc finger protein 106), also known as zinc finger protein 474, is a 1883 amino acid human homolog of the mouse Zfp106 protein and is a member of the Krüppel C2H2-type zinc-finger family. Localized to the nucleus, ZFP106 contains two C2H2-type zinc fingers and is thought to be involved in transcriptional regulation.

订购热线: 4008-898-798

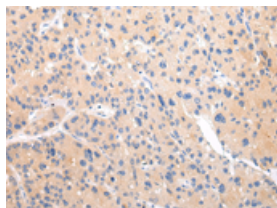
## Applications

### Immunohistochemistry

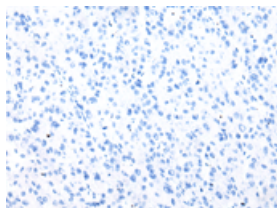
Predicted cell location: Cytoplasm

Positive control: Human liver cancer

Recommended dilution: 20-100



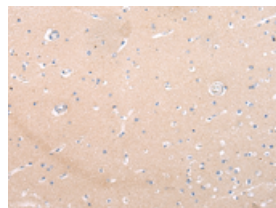
The image on the left is immunohistochemistry of paraffin-embedded Human liver cancer tissue using ml262645(ZNF106 Antibody) at dilution 1/20, on the right is treated with synthetic peptide. (Original magnification:  $\times 200$ )



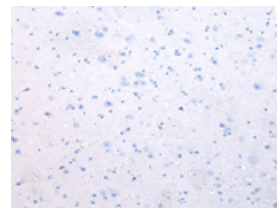
Predicted cell location: Cytoplasm

Positive control: Human brain

Recommended dilution: 20-100



The image on the left is immunohistochemistry of paraffin-embedded Human brain tissue using ml262645(ZNF106 Antibody) at dilution 1/20, on the right is treated with synthetic peptide. (Original magnification:  $\times 200$ )



### ELISA

Recommended dilution: 2000-5000

联系电话: 4008-898-798, 021-61725725

联系QQ: 2881505695, 2881505696

邮箱: [mlbio\\_cn@yeah.net](mailto:mlbio_cn@yeah.net)

网址: [www.mlbio.cn](http://www.mlbio.cn)