

Anti-A2M antibody

Cat. No.	ml262821
Package	25 µl/100 µl/200 µl
Storage	-20°C, pH7.4 PBS, 0.05% NaN ₃ , 40% Glycerol

Product overview

Description	Anti-A2M rabbit polyclonal antibody
Applications	ELISA, IHC
Immunogen	Synthetic peptide of human A2M
Reactivity	Human
Content	0.5 mg/ml
Host species	Rabbit
Ig class	Immunogen-specific rabbit IgG
Purification	Antigen affinity purification

Target information

Symbol	A2M
Full name	alpha-2-macroglobulin
Synonyms	A2MD; CPAMD5; FWP007; S863-7
Swissprot	P01023

Target Background

Alpha-2-macroglobulin is a protease inhibitor and cytokine transporter. It inhibits many proteases, including trypsin, thrombin and collagenase. A2M is implicated in Alzheimer disease (AD) due to its ability to mediate the clearance and degradation of A-beta, the major component of beta-amyloid deposits.

订购热线: 4008-898-798

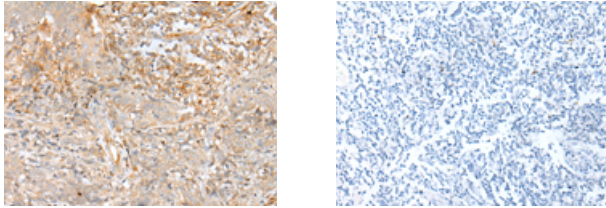
Applications

Immunohistochemistry

Predicted cell location: Secreted

Positive control: Human cervical cancer

Recommended dilution: 20-100



The image on the left is immunohistochemistry of paraffin-embedded Human cervical cancer tissue using ml262821(A2M Antibody) at dilution 1/20, on the right is treated with synthetic peptide. (Original magnification: $\times 200$)

ELISA

Recommended dilution: 5000-10000

联系电话: 4008-898-798, 021-61725725

联系QQ: 2881505695, 2881505696

邮箱: mlbio_cn@yeah.net

网址: www.mlbio.cn