

## Anti-NRG1 antibody

<b>Cat. No.</b>	ml262931
<b>Package</b>	25 µl/100 µl/200 µl
<b>Storage</b>	-20°C, pH7.4 PBS, 0.05% NaN <sub>3</sub> , 40% Glycerol

### Product overview

<b>Description</b>	Anti-NRG1 rabbit polyclonal antibody
<b>Applications</b>	ELISA, IHC
<b>Immunogen</b>	Synthetic peptide of human NRG1
<b>Reactivity</b>	Human, Rat
<b>Content</b>	0.7 mg/ml
<b>Host species</b>	Rabbit
<b>Ig class</b>	Immunogen-specific rabbit IgG
<b>Purification</b>	Antigen affinity purification

### Target information

<b>Symbol</b>	NRG1
<b>Full name</b>	neuregulin 1
<b>Synonyms</b>	GGF; HGL; HRG; NDF; ARIA; GGF2; HRG1; HRGA; SMDf; MST131; MSTP131; NRG1-IT2
<b>Swissprot</b>	Q02297

### Target Background

The protein encoded by this gene is a membrane glycoprotein that mediates cell-cell signaling and plays a critical role in the growth and development of multiple organ systems. An extraordinary variety of different isoforms are produced from this gene through alternative promoter usage and splicing. These isoforms are expressed in a tissue-specific manner and differ significantly in their structure, and are classified as types I, II, III, IV, V and VI. Dysregulation of this gene has been linked to diseases such as cancer, schizophrenia, and bipolar disorder (BPD).

订购热线: 4008-898-798

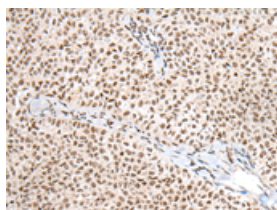
## Applications

### Immunohistochemistry

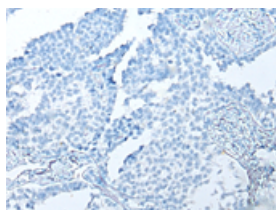
Predicted cell location: Nucleus

Positive control: Human ovarian cancer

Recommended dilution: 25-100



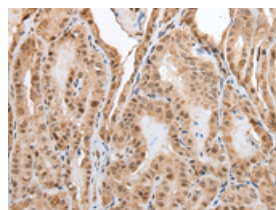
The image on the left is immunohistochemistry of paraffin-embedded Human ovarian cancer tissue using ml262931(NRG1 Antibody) at dilution 1/20, on the right is treated with synthetic peptide. (Original magnification:  $\times 200$ )



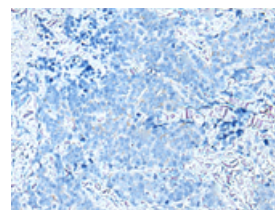
Predicted cell location: Nucleus

Positive control: Human thyroid cancer

Recommended dilution: 25-100



The image on the left is immunohistochemistry of paraffin-embedded Human thyroid cancer tissue using ml262931(NRG1 Antibody) at dilution 1/20, on the right is treated with synthetic peptide. (Original magnification:  $\times 200$ )



### ELISA

Recommended dilution: 5000-10000

联系电话: 4008-898-798, 021-61725725

联系QQ: 2881505695, 2881505696

邮箱: [mlbio\\_cn@yeah.net](mailto:mlbio_cn@yeah.net)

网址: [www.mlbio.cn](http://www.mlbio.cn)