

Anti-ALPK2 antibody

Cat. No.	ml262946
Package	25 µl/100 µl/200 µl
Storage	-20°C, pH7.4 PBS, 0.05% NaN ₃ , 40% Glycerol

Product overview

Description	Anti-ALPK2 rabbit polyclonal antibody
Applications	ELISA, IHC
Immunogen	Synthetic peptide of human ALPK2
Reactivity	Human
Content	0.24 mg/ml
Host species	Rabbit
Ig class	Immunogen-specific rabbit IgG
Purification	Antigen affinity purification

Target information

Symbol	ALPK2
Full name	alpha kinase 2
Synonyms	HAK
Swissprot	Q86TB3

Target Background

The phosphorylation and dephosphorylation of proteins on serine and threonine residues is an essential means of regulating a broad range of cellular functions in eukaryotes, including cell division, homeostasis and apoptosis. α-protein kinase 2, also known as ALPK2 or HAK (Heart alpha-protein kinase), is a 2,170 amino acid member of the protein kinase superfamily and contains one α-type protein kinase domain and one Ig-like domain. Expressed at higher levels in heart tissue, α-protein kinase 2 recognizes and phosphorylates specific phosphorylation sites that are surrounded by peptides which have an α-helical conformation, possibly playing a role in vesicle trafficking.

订购热线: 4008-898-798

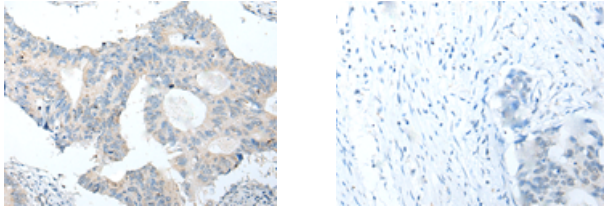
Applications

Immunohistochemistry

Predicted cell location: Cytoplasm

Positive control: Human colorectal cancer

Recommended dilution: 20-100



The image on the left is immunohistochemistry of paraffin-embedded Human colorectal cancer tissue using ml262946(ALPK2 Antibody) at dilution 1/20, on the right is treated with synthetic peptide. (Original magnification: $\times 200$)

ELISA

Recommended dilution: 2000-5000

联系电话: 4008-898-798, 021-61725725

联系QQ: 2881505695, 2881505696

邮箱: mlbio_cn@yeah.net

网址: www.mlbio.cn