

Anti-MT-ND5 antibody

Cat. No.	ml262970
Package	25 µl/100 µl/200 µl
Storage	-20°C, pH7.4 PBS, 0.05% NaN ₃ , 40% Glycerol

Product overview

Description	Anti-MT-ND5 rabbit polyclonal antibody
Applications	ELISA, IHC
Immunogen	Synthetic peptide of human MT-ND5
Reactivity	Human
Content	0.3 mg/ml
Host species	Rabbit
Ig class	Immunogen-specific rabbit IgG
Purification	Antigen affinity purification

Target information

Symbol	MT-ND5
Full name	mitochondrially encoded NADH dehydrogenase 5
Synonyms	MTND5; ND5
Swissprot	P03915

Target Background

Core subunit of the mitochondrial membrane respiratory chain NADH dehydrogenase (Complex I) that is believed to belong to the minimal assembly required for catalysis. Complex I functions in the transfer of electrons from NADH to the respiratory chain. The immediate electron acceptor for the enzyme is believed to be ubiquinone.

订购热线: 4008-898-798

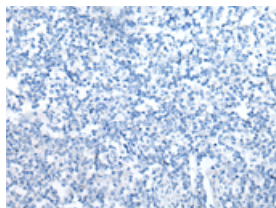
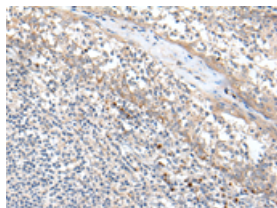
Applications

Immunohistochemistry

Predicted cell location: Cell membrane

Positive control: Human tonsil

Recommended dilution: 25-100

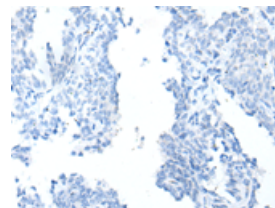
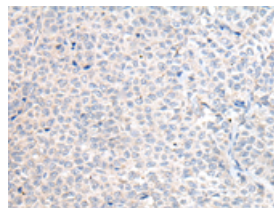


The image on the left is immunohistochemistry of paraffin-embedded Human tonsil tissue using ml262970(MT-ND5 Antibody) at dilution 1/25, on the right is treated with synthetic peptide. (Original magnification: $\times 200$)

Predicted cell location: Cell membrane

Positive control: Human ovarian cancer

Recommended dilution: 25-100



The image on the left is immunohistochemistry of paraffin-embedded Human ovarian cancer tissue using ml262970(MT-ND5 Antibody) at dilution 1/25, on the right is treated with synthetic peptide. (Original magnification: $\times 200$)

ELISA

Recommended dilution: 5000-10000

联系电话: 4008-898-798, 021-61725725

联系QQ: 2881505695, 2881505696

邮箱: mlbio_cn@yeah.net

网址: www.mlbio.cn