

## Anti-GAS2L3 antibody

<b>Cat. No.</b>	ml263010
<b>Package</b>	25 µl/100 µl/200 µl
<b>Storage</b>	-20°C, pH7.4 PBS, 0.05% NaN <sub>3</sub> , 40% Glycerol

### Product overview

<b>Description</b>	Anti-GAS2L3 rabbit polyclonal antibody
<b>Applications</b>	ELISA, IHC
<b>Immunogen</b>	Synthetic peptide of human GAS2L3
<b>Reactivity</b>	Human
<b>Content</b>	0.6 mg/ml
<b>Host species</b>	Rabbit
<b>Ig class</b>	Immunogen-specific rabbit IgG
<b>Purification</b>	Antigen affinity purification

### Target information

<b>Symbol</b>	GAS2L3
<b>Full name</b>	growth arrest specific 2 like 3
<b>Synonyms</b>	G2L3
<b>Swissprot</b>	Q86XJ1

### Target Background

Gas2L3 (growth arrest-specific 2 like 3) is a 694 amino acid protein that contains one calponin-homology (CH) domain and may function in a similar manner to Gas2. The gene encoding Gas2L3 maps to human chromosome 12, which encodes over 1,100 genes and comprises approximately 4.5% of the human genome. Cytoskeletal linker protein. May promote and stabilize the formation of the actin and microtubule network.

订购热线: 4008-898-798

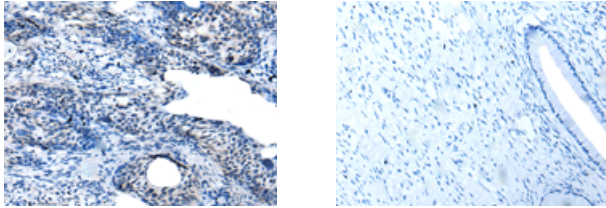
#### Applications

##### Immunohistochemistry

Predicted cell location: Cytoplasm

Positive control: Human cervical cancer

Recommended dilution: 10-50



The image on the left is immunohistochemistry of paraffin-embedded Human cervical cancer tissue using ml263010(GAS2L3 Antibody) at dilution 1/25, on the right is treated with synthetic peptide. (Original magnification:  $\times 200$ )

##### ELISA

Recommended dilution: 5000-10000

联系电话: 4008-898-798, 021-61725725

联系QQ: 2881505695, 2881505696

邮箱: [mlbio\\_cn@yeah.net](mailto:mlbio_cn@yeah.net)

网址: [www.mlbio.cn](http://www.mlbio.cn)