

Anti-EPX antibody

Cat. No.	ml263094
Package	25 µl/100 µl/200 µl
Storage	-20°C, pH7.4 PBS, 0.05% NaN ₃ , 40% Glycerol

Product overview

Description	Anti-EPX rabbit polyclonal antibody
Applications	ELISA, IHC
Immunogen	Synthetic peptide of human EPX
Reactivity	Human
Content	0.2 mg/ml
Host species	Rabbit
Ig class	Immunogen-specific rabbit IgG
Purification	Antigen affinity purification

Target information

Symbol	EPX
Full name	eosinophil peroxidase
Synonyms	EPO; EPP; EPXD; EPX-PEN
Swissprot	P11678

Target Background

This gene is a member of the peroxidase gene family and is expressed in eosinophils. The encoded precursor protein is processed into covalently attached heavy and light chains to form the mature enzyme, which functions as an oxidant. The enzyme is released at sites of parasitic infection or allergen stimulation to mediate lysis of protozoa or parasitic worms. The gene is found in a cluster of three peroxidase genes at chromosome 17q23. Mutations in this gene result in eosinophil peroxidase deficiency.

订购热线: 4008-898-798

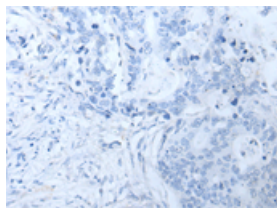
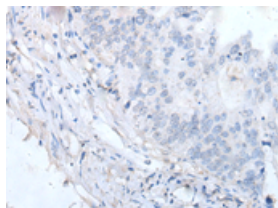
Applications

Immunohistochemistry

Predicted cell location: Cytoplasm

Positive control: Human colorectal cancer

Recommended dilution: 20-100

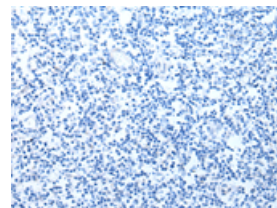
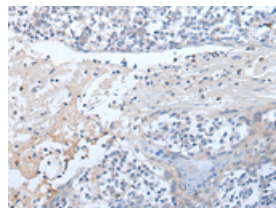


The image on the left is immunohistochemistry of paraffin-embedded Human colorectal cancer tissue using ml263094(EPX Antibody) at dilution 1/20, on the right is treated with synthetic peptide. (Original magnification: $\times 200$)

Predicted cell location: Cytoplasm

Positive control: Human tonsil

Recommended dilution: 20-100



The image on the left is immunohistochemistry of paraffin-embedded Human tonsil tissue using ml263094(EPX Antibody) at dilution 1/20, on the right is treated with synthetic peptide. (Original magnification: $\times 200$)

ELISA

Recommended dilution: 500-1000

联系电话: 4008-898-798, 021-61725725

联系QQ: 2881505695, 2881505696

邮箱: mlbio_cn@yeah.net

网址: www.mlbio.cn