

Anti-PIK3CA antibody

Cat. No.	ml263099
Package	25 µl/100 µl/200 µl
Storage	-20°C, pH7.4 PBS, 0.05% NaN ₃ , 40% Glycerol

Product overview

Description	Anti-PIK3CA rabbit polyclonal antibody
Applications	ELISA, IHC
Immunogen	Synthetic peptide of human PIK3CA
Reactivity	Human, Mouse
Content	0.5 mg/ml
Host species	Rabbit
Ig class	Immunogen-specific rabbit IgG
Purification	Antigen affinity purification

Target information

Symbol	PIK3CA
Full name	phosphatidylinositol-4,5-bisphosphate 3-kinase catalytic subunit alpha
Synonyms	MCM; CWS5; MCAP; PI3K; CLOVE; MCMTc; p110-alpha
Swissprot	P42336

Target Background

Phosphatidylinositol 3-kinase is composed of an 85 kDa regulatory subunit and a 110 kDa catalytic subunit. The protein encoded by this gene represents the catalytic subunit, which uses ATP to phosphorylate PtdIns, PtdIns4P and PtdIns(4,5)P₂. This gene has been found to be oncogenic and has been implicated in cervical cancers.

订购热线: 4008-898-798

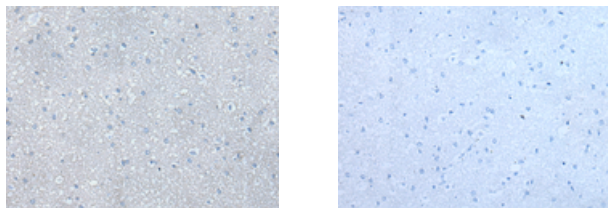
Applications

Immunohistochemistry

Predicted cell location: Cytoplasm

Positive control: Human brain

Recommended dilution: 25-100



The image on the left is immunohistochemistry of paraffin-embedded Human brain tissue using ml263099(PIK3CA Antibody) at dilution 1/25, on the right is treated with synthetic peptide. (Original magnification: $\times 200$)

ELISA

Recommended dilution: 5000-10000

联系电话: 4008-898-798, 021-61725725

联系QQ: 2881505695, 2881505696

邮箱: mlbio_cn@yeah.net

网址: www.mlbio.cn