

## Anti-ZBTB11 antibody

|                 |   |
|-----------------|---|
| <b>Cat. No.</b> | ml263132  |
| <b>Package</b>  | 25 µl/100 µl/200 µl                                     |
| <b>Storage</b>  | -20°C, pH7.4 PBS, 0.05% NaN <sub>3</sub> , 40% Glycerol |

### Product overview

|                     |  |
|---------------------|--|
| <b>Description</b>  | Anti-ZBTB11 rabbit polyclonal antibody |
| <b>Applications</b> | ELISA, IHC                             |
| <b>Immunogen</b>    | Synthetic peptide of human ZBTB11      |
| <b>Reactivity</b>   | Human                                  |
| <b>Content</b>      | 0.4 mg/ml                              |
| <b>Host species</b> | Rabbit                                 |
| <b>Ig class</b>     | Immunogen-specific rabbit IgG          |
| <b>Purification</b> | Antigen affinity purification          |

### Target information

|                  |  |
|------------------|--|
| <b>Symbol</b>    | ZBTB11                                   |
| <b>Full name</b> | zinc finger and BTB domain containing 11 |
| <b>Synonyms</b>  | ZNF913; ZNF-U69274                       |
| <b>Swissprot</b> | O95625                                   |

### Target Background

The Zinc finger and BTB domain-containing protein 11 (ZBTB11) contains 1 BTB (POZ) domain and 12 C2H2-type zinc fingers suggesting a role in transcription regulation. The gene encoding ZBTB11 maps to chromosome 3, which contains over 1,100 genes. Notably, a chemokine receptor gene cluster and a variety of human cancer related loci reside on chromosome 3. Particular regions of the chromosome 3 short arm are deleted in many types of cancer cells as well.

订购热线: 4008-898-798

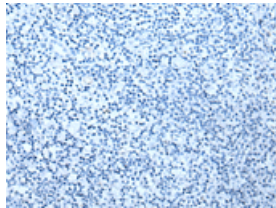
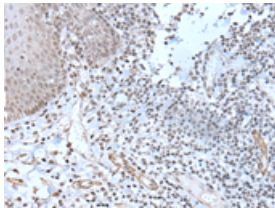
#### Applications

##### Immunohistochemistry

Predicted cell location: Nucleus

Positive control: Human tonsil

Recommended dilution: 10-50



The image on the left is immunohistochemistry of paraffin-embedded Human tonsil tissue using ml263132(ZBTB11 Antibody) at dilution 1/20, on the right is treated with synthetic peptide. (Original magnification:  $\times 200$ )

##### ELISA

Recommended dilution: 5000-10000

联系电话: 4008-898-798, 021-61725725

联系QQ: 2881505695, 2881505696

邮箱: [mlbio\\_cn@yeah.net](mailto:mlbio_cn@yeah.net)

网址: [www.mlbio.cn](http://www.mlbio.cn)