

Anti-ZDHHC5 antibody

Cat. No.	ml263138
Package	25 µl/100 µl/200 µl
Storage	-20°C, pH7.4 PBS, 0.05% NaN ₃ , 40% Glycerol

Product overview

Description	Anti-ZDHHC5 rabbit polyclonal antibody
Applications	ELISA, IHC
Immunogen	Synthetic peptide of human ZDHHC5
Reactivity	Human, Mouse, Rat
Content	0.2 mg/ml
Host species	Rabbit
Ig class	Immunogen-specific rabbit IgG
Purification	Antigen affinity purification

Target information

Symbol	ZDHHC5
Full name	zinc finger, DHHC-type containing 5
Synonyms	DHHC5; ZNF375
Swissprot	Q9C0B5

Target Background

Palmitoyl acyltransferase for the G-protein coupled receptor SSTR5. Also palmitoylates FLOT2 (By similarity).

订购热线: 4008-898-798

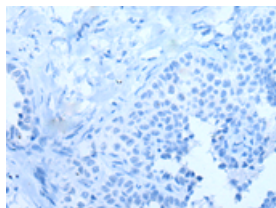
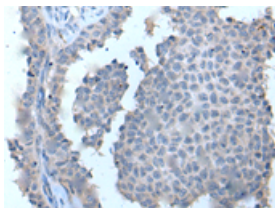
Applications

Immunohistochemistry

Predicted cell location: Cell membrane and Cytoplasm

Positive control: Human ovarian cancer

Recommended dilution: 20-100

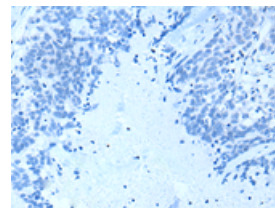
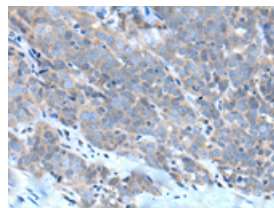


The image on the left is immunohistochemistry of paraffin-embedded Human ovarian cancer tissue using ml263138(ZDHHC5 Antibody) at dilution 1/20, on the right is treated with synthetic peptide. (Original magnification: $\times 200$)

Predicted cell location: Cell membrane and Cytoplasm

Positive control: Human thyroid cancer

Recommended dilution: 20-100



The image on the left is immunohistochemistry of paraffin-embedded Human thyroid cancer tissue using ml263138(ZDHHC5 Antibody) at dilution 1/20, on the right is treated with synthetic peptide. (Original magnification: $\times 200$)

ELISA

Recommended dilution: 500-1000

联系电话: 4008-898-798, 021-61725725

联系QQ: 2881505695, 2881505696

邮箱: mlbio_cn@yeah.net

网址: www.mlbio.cn