

Anti-ZNF143 antibody

Cat. No.	ml263141
Package	25 µl/100 µl/200 µl
Storage	-20°C, pH7.4 PBS, 0.05% NaN ₃ , 40% Glycerol

Product overview

Description	Anti-ZNF143 rabbit polyclonal antibody
Applications	ELISA, IHC
Immunogen	Synthetic peptide of human ZNF143
Reactivity	Human, Mouse, Rat
Content	0.5 mg/ml
Host species	Rabbit
Ig class	Immunogen-specific rabbit IgG
Purification	Antigen affinity purification

Target information

Symbol	ZNF143
Full name	zinc finger protein 143
Synonyms	SBF; STAF; pHZ-1
Swissprot	P52747

Target Background

ZNF143 (zinc finger protein 143), also known as SBF, STAF or pHZ-1, is a 626 amino acid protein that contains seven C2H2-type zinc fingers and belongs to the GLI (glioma-associated oncogene) C2H2-type zinc-finger family. Localized to the nucleus and expressed ubiquitously with highest expression in ovaries, ZNF143 functions as a transcriptional activator that, via its C2H2-type zinc domains, binds to the SPH motif found in the promoters of small nuclear RNAs (snRNA). Through its ability to bind the promoters of various snRNA genes, ZNF143 controls the subsequent expression of the corresponding protein products. ZNF143 expression is induced upon DNA damage, suggesting an important role for ZNF143 in DNA repair events.

订购热线: 4008-898-798

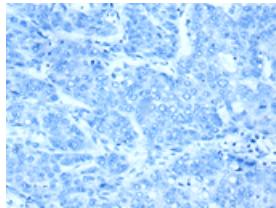
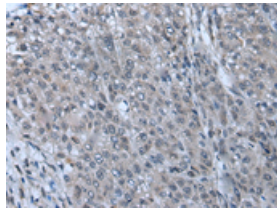
Applications

Immunohistochemistry

Predicted cell location: Nucleus

Positive control: Human liver cancer

Recommended dilution: 10-50

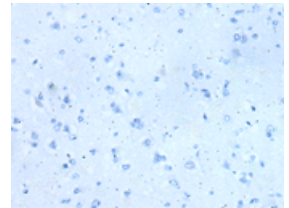
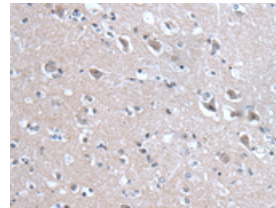


The image on the left is immunohistochemistry of paraffin-embedded Human liver cancer tissue using ml263141(ZNF143 Antibody) at dilution 1/20, on the right is treated with synthetic peptide. (Original magnification: $\times 200$)

Predicted cell location: Nucleus

Positive control: Human brain

Recommended dilution: 10-50



The image on the left is immunohistochemistry of paraffin-embedded Human brain tissue using ml263141(ZNF143 Antibody) at dilution 1/20, on the right is treated with synthetic peptide. (Original magnification: $\times 200$)

ELISA

Recommended dilution: 5000-10000

联系电话: 4008-898-798, 021-61725725

联系QQ: 2881505695, 2881505696

邮箱: mlbio_cn@yeah.net

网址: www.mlbio.cn