

## Anti-YPEL5 antibody

<b>Cat. No.</b>	ml263170
<b>Package</b>	25 µl/100 µl/200 µl
<b>Storage</b>	-20°C, pH7.4 PBS, 0.05% NaN <sub>3</sub> , 40% Glycerol

### Product overview

<b>Description</b>	Anti-YPEL5 rabbit polyclonal antibody
<b>Applications</b>	ELISA, IHC
<b>Immunogen</b>	Synthetic peptide of human YPEL5
<b>Reactivity</b>	Human, Mouse
<b>Content</b>	0.3 mg/ml
<b>Host species</b>	Rabbit
<b>Ig class</b>	Immunogen-specific rabbit IgG
<b>Purification</b>	Antigen affinity purification

### Target information

<b>Symbol</b>	YPEL5
<b>Full name</b>	yippee like 5
<b>Synonyms</b>	CGI-127
<b>Swissprot</b>	P62699

### Target Background

YPEL5 (yippee-like 5), also known as CGI-127, is a 121 amino acid protein that may be involved in cell division-related function. During cell cycle progression, YPEL5 localizes to multiple subcellular regions. At interphase of mitosis, YPEL5 localizes to the nucleus and centrosome, then changes its location sequentially to the spindle poles, mitotic spindle and spindle midzone, and finally it is transferred to the midbody at cytokinesis. The function of YPEL5 during cell division is not yet fully understood.

订购热线: 4008-898-798

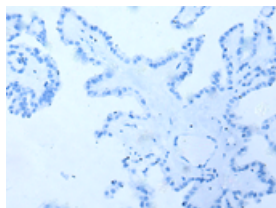
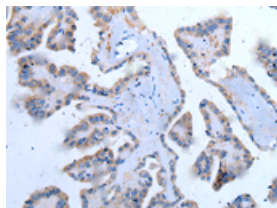
## Applications

### Immunohistochemistry

Predicted cell location: Cell membrane and Cytoplasm

Positive control: Human thyroid cancer

Recommended dilution: 10-50

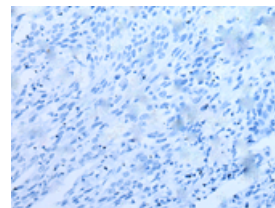
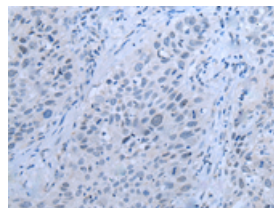


The image on the left is immunohistochemistry of paraffin-embedded Human thyroid cancer tissue using ml263170(YPEL5 Antibody) at dilution 1/20, on the right is treated with synthetic peptide. (Original magnification:  $\times 200$ )

Predicted cell location: Cell membrane and Cytoplasm

Positive control: Human lung cancer

Recommended dilution: 10-50



The image on the left is immunohistochemistry of paraffin-embedded Human lung cancer tissue using ml263170(YPEL5 Antibody) at dilution 1/20, on the right is treated with synthetic peptide. (Original magnification:  $\times 200$ )

### ELISA

Recommended dilution: 5000-10000

联系电话: 4008-898-798, 021-61725725

联系QQ: 2881505695, 2881505696

邮箱: [mlbio\\_cn@yeah.net](mailto:mlbio_cn@yeah.net)

网址: [www.mlbio.cn](http://www.mlbio.cn)