

Anti-WDHD1 antibody

Cat. No.	ml263183
Package	25 µl/100 µl/200 µl
Storage	-20°C, pH7.4 PBS, 0.05% NaN ₃ , 40% Glycerol

Product overview

Description	Anti-WDHD1 rabbit polyclonal antibody
Applications	ELISA, IHC
Immunogen	Synthetic peptide of human WDHD1
Reactivity	Human
Content	0.9 mg/ml
Host species	Rabbit
Ig class	Immunogen-specific rabbit IgG
Purification	Antigen affinity purification

Target information

Symbol	WDHD1
Full name	WD repeat and HMG-box DNA binding protein 1
Synonyms	AND1; CTF4; AND-1; CHTF4
Swissprot	O75717

Target Background

The protein encoded by this gene contains multiple N-terminal WD40 domains and a C-terminal high mobility group (HMG) box. WD40 domains are found in a variety of eukaryotic proteins and may function as adaptor/regulatory modules in signal transduction, pre-mRNA processing and cytoskeleton assembly. HMG boxes are found in many eukaryotic proteins involved in chromatin assembly, transcription and replication. Alternative splicing results in two transcript variants encoding different isoforms.

订购热线: 4008-898-798

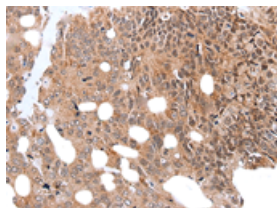
Applications

Immunohistochemistry

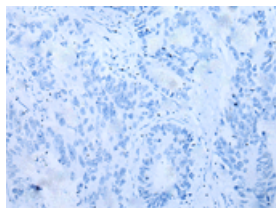
Predicted cell location: Nucleus

Positive control: Human colorectal cancer

Recommended dilution: 25-100



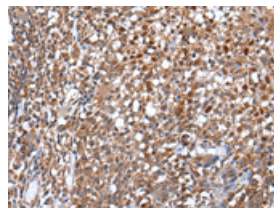
The image on the left is immunohistochemistry of paraffin-embedded Human colorectal cancer tissue using ml263183(WDHD1 Antibody) at dilution 1/35, on the right is treated with synthetic peptide. (Original magnification: $\times 200$)



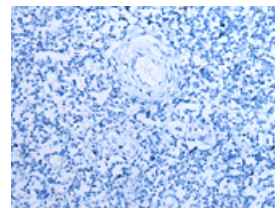
Predicted cell location: Nucleus

Positive control: Human tonsil

Recommended dilution: 25-100



The image on the left is immunohistochemistry of paraffin-embedded Human tonsil tissue using ml263183(WDHD1 Antibody) at dilution 1/35, on the right is treated with synthetic peptide. (Original magnification: $\times 200$)



ELISA

Recommended dilution: 5000-10000

联系电话: 4008-898-798, 021-61725725

联系QQ: 2881505695, 2881505696

邮箱: mlbio_cn@yeah.net

网址: www.mlbio.cn