

## Anti-VAX1 antibody

<b>Cat. No.</b>	ml263205
<b>Package</b>	25 µl/100 µl/200 µl
<b>Storage</b>	-20°C, pH7.4 PBS, 0.05% NaN <sub>3</sub> , 40% Glycerol

### Product overview

<b>Description</b>	Anti-VAX1 rabbit polyclonal antibody
<b>Applications</b>	ELISA, IHC
<b>Immunogen</b>	Synthetic peptide of human VAX1
<b>Reactivity</b>	Human, Mouse, Rat
<b>Content</b>	0.5 mg/ml
<b>Host species</b>	Rabbit
<b>Ig class</b>	Immunogen-specific rabbit IgG
<b>Purification</b>	Antigen affinity purification

### Target information

<b>Symbol</b>	VAX1
<b>Full name</b>	ventral anterior homeobox 1
<b>Synonyms</b>	MCOPS11
<b>Swissprot</b>	Q5SQQ9

### Target Background

This gene encodes a homeo-domain containing protein from a class of homeobox transcription factors which are conserved in vertebrates. Genes of this family are involved in the regulation of body development and morphogenesis. The most conserved genes, called HOX genes are found in special gene clusters. This gene belongs to the VAX subfamily and lies in the vicinity of the EMX homeobox gene family. Another member of VAX family is located on chromosome 2. The encoded protein may play an important role in the development of anterior ventral forebrain and visual system. Multiple transcript variants encoding different isoforms have been found for this gene.

订购热线: 4008-898-798

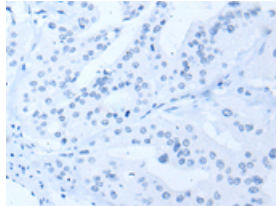
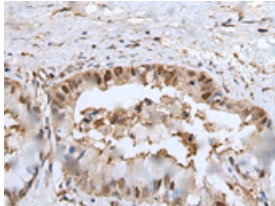
#### Applications

##### Immunohistochemistry

Predicted cell location: Nucleus

Positive control: Human liver cancer

Recommended dilution: 20-100



The image on the left is immunohistochemistry of paraffin-embedded Human liver cancer tissue using ml263205(VAX1 Antibody) at dilution 1/20, on the right is treated with synthetic peptide. (Original magnification:  $\times 200$ )

##### ELISA

Recommended dilution: 5000-10000

联系电话: 4008-898-798, 021-61725725

联系QQ: 2881505695, 2881505696

邮箱: [mlbio\\_cn@yeah.net](mailto:mlbio_cn@yeah.net)

网址: [www.mlbio.cn](http://www.mlbio.cn)