

## Anti-B3GALT6 antibody

<b>Cat. No.</b>	ml263256
<b>Package</b>	25 µl/100 µl/200 µl
<b>Storage</b>	-20°C, pH7.4 PBS, 0.05% NaN <sub>3</sub> , 40% Glycerol

### Product overview

<b>Description</b>	Anti-B3GALT6 rabbit polyclonal antibody
<b>Applications</b>	ELISA, IHC
<b>Immunogen</b>	Synthetic peptide of human B3GALT6
<b>Reactivity</b>	Human, Mouse
<b>Content</b>	0.3 mg/ml
<b>Host species</b>	Rabbit
<b>Ig class</b>	Immunogen-specific rabbit IgG
<b>Purification</b>	Antigen affinity purification

### Target information

<b>Symbol</b>	B3GALT6
<b>Full name</b>	beta-1,3-galactosyltransferase 6
<b>Synonyms</b>	EDSP2; SEMDJL1; beta3GalT6
<b>Swissprot</b>	Q96L58

### Target Background

The enzyme encoded by this intronless gene is a beta-1,3-galactosyltransferase found in the medial Golgi apparatus, where it catalyzes the transfer of galactose from UDP-galactose to substrates containing a terminal beta-linked galactose moiety. The encoded enzyme has a particular affinity for galactose-beta-1,4-xylose found in the linker region of glycosamines. This enzyme is required for glycosaminoglycan synthesis.

订购热线: 4008-898-798

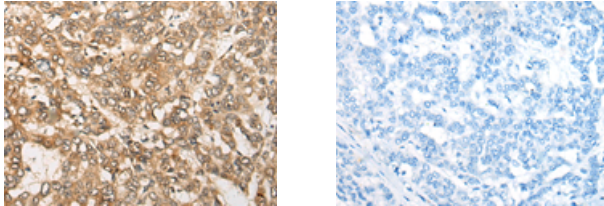
#### Applications

##### Immunohistochemistry

Predicted cell location: Cell membrane

Positive control: Human liver cancer

Recommended dilution: 25-100



The image on the left is immunohistochemistry of paraffin-embedded Human liver cancer tissue using ml263256(B3GALT6 Antibody) at dilution 1/20, on the right is treated with synthetic peptide. (Original magnification:  $\times 200$ )

##### ELISA

Recommended dilution: 5000-10000

联系电话: 4008-898-798, 021-61725725

联系QQ: 2881505695, 2881505696

邮箱: [mlbio\\_cn@yeah.net](mailto:mlbio_cn@yeah.net)

网址: [www.mlbio.cn](http://www.mlbio.cn)