

## Anti-NKX3-2 antibody

|                 |   |
|-----------------|---|
| <b>Cat. No.</b> | ml263263  |
| <b>Package</b>  | 25 µl/100 µl/200 µl                                     |
| <b>Storage</b>  | -20°C, pH7.4 PBS, 0.05% NaN <sub>3</sub> , 40% Glycerol |

### Product overview

|                     |  |
|---------------------|--|
| <b>Description</b>  | Anti-NKX3-2 rabbit polyclonal antibody |
| <b>Applications</b> | ELISA, IHC                             |
| <b>Immunogen</b>    | Synthetic peptide of human NKX3-2      |
| <b>Reactivity</b>   | Human, Mouse                           |
| <b>Content</b>      | 0.5 mg/ml                              |
| <b>Host species</b> | Rabbit                                 |
| <b>Ig class</b>     | Immunogen-specific rabbit IgG          |
| <b>Purification</b> | Antigen affinity purification          |

### Target information

|                  |                            |
|------------------|----------------------------|
| <b>Symbol</b>    | NKX3-2                     |
| <b>Full name</b> | NK3 homeobox 2             |
| <b>Synonyms</b>  | SMMD; BAPX1; NKX3B; NKX3.2 |
| <b>Swissprot</b> | P78367                     |

### Target Background

This gene encodes a member of the NK family of homeobox-containing proteins. The encoded protein may play a role in skeletal development.

订购热线: 4008-898-798

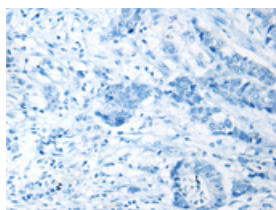
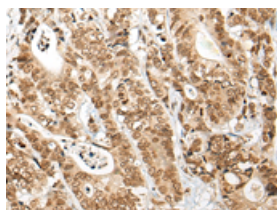
## Applications

### Immunohistochemistry

Predicted cell location: Nucleus

Positive control: Human gastric cancer

Recommended dilution: 25-100

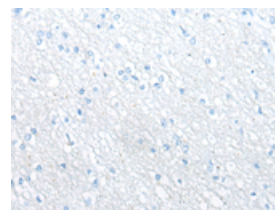
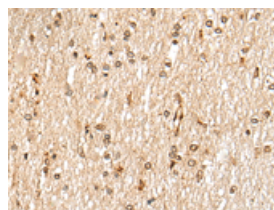


The image on the left is immunohistochemistry of paraffin-embedded Human gastric cancer tissue using ml263263(NKX3-2 Antibody) at dilution 1/25, on the right is treated with synthetic peptide. (Original magnification:  $\times 200$ )

Predicted cell location: Nucleus

Positive control: Human brain

Recommended dilution: 25-100



The image on the left is immunohistochemistry of paraffin-embedded Human brain tissue using ml263263(NKX3-2 Antibody) at dilution 1/25, on the right is treated with synthetic peptide. (Original magnification:  $\times 200$ )

### ELISA

Recommended dilution: 5000-10000

联系电话: 4008-898-798, 021-61725725

联系QQ: 2881505695, 2881505696

邮箱: [mlbio\\_cn@yeah.net](mailto:mlbio_cn@yeah.net)

网址: [www.mlbio.cn](http://www.mlbio.cn)