

Anti-FAM129C antibody

Cat. No.	ml263268
Package	25 µl/100 µl/200 µl
Storage	-20°C, pH7.4 PBS, 0.05% NaN ₃ , 40% Glycerol

Product overview

Description	Anti-FAM129C rabbit polyclonal antibody
Applications	ELISA, IHC
Immunogen	Synthetic peptide of human FAM129C
Reactivity	Human
Content	0.7 mg/ml
Host species	Rabbit
Ig class	Immunogen-specific rabbit IgG
Purification	Antigen affinity purification

Target information

Symbol	FAM129C
Full name	family with sequence similarity 129 member C
Synonyms	BCNP1
Swissprot	Q86XR2

Target Background

FAM129C, also known as BCNP1, BCNP1 is a 697 amino acid protein that belongs to the Niban family. Specifically expressed in B-lymphocytes, BCNP1 exists as five alternatively spliced isoforms. BCNP1 is highly expressed in B-cell malignancies, lymph node and spleen, with little to no expression in other tissues, including other hemopoietic tissues. The gene encoding the BCNP1 protein maps to human chromosome 19p13.11. Consisting of around 63 million bases with over 1,400 genes, chromosome 19 makes up over 2% of human genomic DNA. Chromosome 19 includes a diversity of interesting genes and is recognized for having the greatest gene density of the human chromosomes. It is the genetic home for a number of immunoglobulin superfamily members including the killer cell and leukocyte Ig-like receptors, a number of ICAMs, the CEACAM and PSG family, and Fcγ receptors. Key genes for eye color and hair color also map to chromosome 19.

订购热线: 4008-898-798

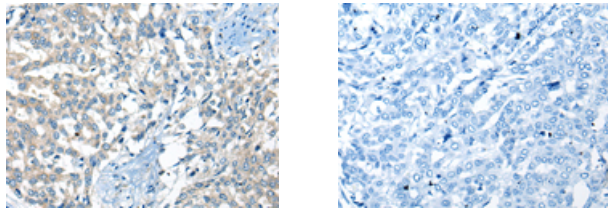
Applications

Immunohistochemistry

Predicted cell location: Cytoplasm and Cell membrane

Positive control: Human liver cancer

Recommended dilution: 20-100



The image on the left is immunohistochemistry of paraffin-embedded Human liver cancer tissue using ml263268(FAM129C Antibody) at dilution 1/30, on the right is treated with synthetic peptide. (Original magnification: $\times 200$)

ELISA

Recommended dilution: 500-1000

联系电话: 4008-898-798, 021-61725725

联系QQ: 2881505695, 2881505696

邮箱: mlbio_cn@yeah.net

网址: www.mlbio.cn