

## Anti-BICD1 antibody

<b>Cat. No.</b>	ml263276
<b>Package</b>	25 µl/100 µl/200 µl
<b>Storage</b>	-20°C, pH7.4 PBS, 0.05% NaN <sub>3</sub> , 40% Glycerol

### Product overview

<b>Description</b>	Anti-BICD1 rabbit polyclonal antibody
<b>Applications</b>	ELISA, IHC
<b>Immunogen</b>	Synthetic peptide of human BICD1
<b>Reactivity</b>	Human, Mouse
<b>Content</b>	0.3 mg/ml
<b>Host species</b>	Rabbit
<b>Ig class</b>	Immunogen-specific rabbit IgG
<b>Purification</b>	Antigen affinity purification

### Target information

<b>Symbol</b>	BICD1
<b>Full name</b>	bicaudal D homolog 1 (Drosophila)
<b>Synonyms</b>	BICD
<b>Swissprot</b>	Q96G01

### Target Background

This gene is one of two human homologs of *Drosophila* bicaudal-D. It has been implicated in COPI-independent membrane transport from the Golgi apparatus to the endoplasmic reticulum. Two alternative splice variants have been described. Other alternative splice variants that encode different protein isoforms have been described but their full-length nature has not been determined.

订购热线: 4008-898-798

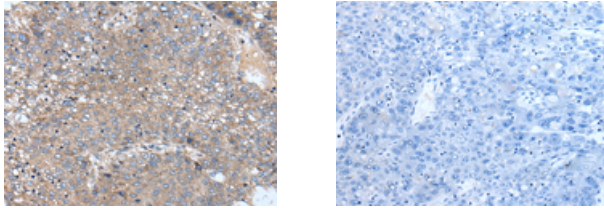
#### Applications

##### Immunohistochemistry

Predicted cell location: Cytoplasm and Cell membrane

Positive control: Human liver cancer

Recommended dilution: 20-100



The image on the left is immunohistochemistry of paraffin-embedded Human liver cancer tissue using ml263276(BICD1 Antibody) at dilution 1/20, on the right is treated with synthetic peptide. (Original magnification:  $\times 200$ )

##### ELISA

Recommended dilution: 5000-10000

联系电话: 4008-898-798, 021-61725725

联系QQ: 2881505695, 2881505696

邮箱: [mlbio\\_cn@yeah.net](mailto:mlbio_cn@yeah.net)

网址: [www.mlbio.cn](http://www.mlbio.cn)