

Anti-BLM antibody

Cat. No.	ml263279
Package	25 µl/100 µl/200 µl
Storage	-20°C, pH7.4 PBS, 0.05% NaN ₃ , 40% Glycerol

Product overview

Description	Anti-BLM rabbit polyclonal antibody
Applications	ELISA, IHC
Immunogen	Synthetic peptide of human BLM
Reactivity	Human
Content	0.7 mg/ml
Host species	Rabbit
Ig class	Immunogen-specific rabbit IgG
Purification	Antigen affinity purification

Target information

Symbol	BLM
Full name	Bloom syndrome RecQ like helicase
Synonyms	BS; RECQ2; RECQL2; RECQL3
Swissprot	P54132

Target Background

The Bloom syndrome gene product is related to the RecQ subset of DExH box-containing DNA helicases and has both DNA-stimulated ATPase and ATP-dependent DNA helicase activities. Mutations causing Bloom syndrome delete or alter helicase motifs and may disable the 3'-5' helicase activity. The normal protein may act to suppress inappropriate recombination.

订购热线: 4008-898-798

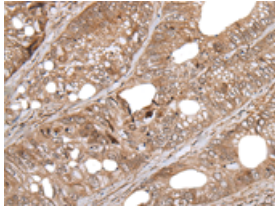
Applications

Immunohistochemistry

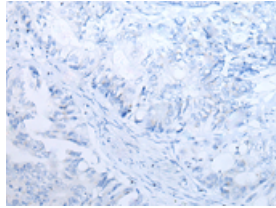
Predicted cell location: Nucleus

Positive control: Human colorectal cancer

Recommended dilution: 25-100



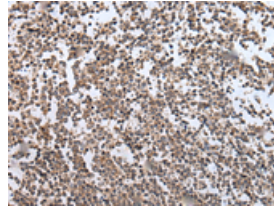
The image on the left is immunohistochemistry of paraffin-embedded Human colorectal cancer tissue using ml263279(BLM Antibody) at dilution 1/35, on the right is treated with synthetic peptide. (Original magnification: $\times 200$)



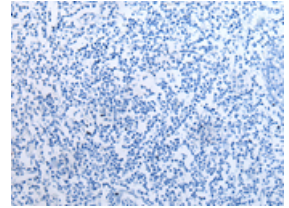
Predicted cell location: Nucleus

Positive control: Human tonsil

Recommended dilution: 25-100



The image on the left is immunohistochemistry of paraffin-embedded Human tonsil tissue using ml263279(BLM Antibody) at dilution 1/35, on the right is treated with synthetic peptide. (Original magnification: $\times 200$)



ELISA

Recommended dilution: 5000-10000

联系电话: 4008-898-798, 021-61725725

联系QQ: 2881505695, 2881505696

邮箱: mlbio_cn@yeah.net

网址: www.mlbio.cn