

## Anti-CDC123 antibody

<b>Cat. No.</b>	ml263315
<b>Package</b>	25 µl/100 µl/200 µl
<b>Storage</b>	-20°C, pH7.4 PBS, 0.05% NaN <sub>3</sub> , 40% Glycerol

### Product overview

<b>Description</b>	Anti-CDC123 rabbit polyclonal antibody
<b>Applications</b>	ELISA, IHC
<b>Immunogen</b>	Synthetic peptide of human CDC123
<b>Reactivity</b>	Human, Mouse, Rat
<b>Content</b>	0.7 mg/ml
<b>Host species</b>	Rabbit
<b>Ig class</b>	Immunogen-specific rabbit IgG
<b>Purification</b>	Antigen affinity purification

### Target information

<b>Symbol</b>	CDC123
<b>Full name</b>	cell division cycle 123
<b>Synonyms</b>	D123; C10orf7
<b>Swissprot</b>	O75794

### Target Background

The eukaryotic cell division cycle consists of a number of gene-controlled sequences that involve cyclin dependent kinases (Cdks) and cell division control (Cdc) proteins. Cdc123 (Cell division cycle protein 123), also known as D123, is a 336 amino acid cytoplasmic protein that is involved in cell cycle control. Widely expressed with high expression in thymus, spleen, ovary, testis, small intestine and leukocytes, Cdc123 functions to destabilize Chfr (checkpoint with forkhead and ring finger domain) proteins which, when accumulated, block the G to S phase transition. Cdc123 prevents the Chfr proteins from collecting in the cell, thereby allowing the cell to enter the S phase. Due to its role in cell cycle control, Cdc123 is thought to be a basal marker for luminal breast cancers.

订购热线: 4008-898-798

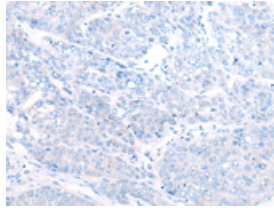
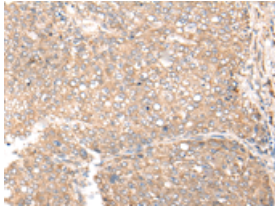
#### Applications

##### Immunohistochemistry

Predicted cell location: Cytoplasm

Positive control: Human liver cancer

Recommended dilution: 25-100



The image on the left is immunohistochemistry of paraffin-embedded Human liver cancer tissue using ml263315(CDC123 Antibody) at dilution 1/35, on the right is treated with synthetic peptide. (Original magnification:  $\times 200$ )

##### ELISA

Recommended dilution: 5000-10000

联系电话: 4008-898-798, 021-61725725

联系QQ: 2881505695, 2881505696

邮箱: [mlbio\\_cn@yeah.net](mailto:mlbio_cn@yeah.net)

网址: [www.mlbio.cn](http://www.mlbio.cn)