

## Anti-C14orf169 antibody

<b>Cat. No.</b>	ml263324
<b>Package</b>	25 µl/100 µl/200 µl
<b>Storage</b>	-20°C, pH7.4 PBS, 0.05% NaN <sub>3</sub> , 40% Glycerol

### Product overview

<b>Description</b>	Anti-C14orf169 rabbit polyclonal antibody
<b>Applications</b>	ELISA, IHC
<b>Immunogen</b>	Synthetic peptide of human C14orf169
<b>Reactivity</b>	Human, Mouse, Rat
<b>Content</b>	0.8 mg/ml
<b>Host species</b>	Rabbit
<b>Ig class</b>	Immunogen-specific rabbit IgG
<b>Purification</b>	Antigen affinity purification

### Target information

<b>Symbol</b>	C14orf169
<b>Full name</b>	chromosome 14 open reading frame 169
<b>Synonyms</b>	ROX; NO66; MAPJD; URLC2; hsNO66
<b>Swissprot</b>	Q9H6W3

### Target Background

Oxygenase that can act as both a histone lysine demethylase and a ribosomal histidine hydroxylase. Specifically demethylates 'Lys-4' (H3K4me) and 'Lys-36' (H3K36me) of histone H3, thereby playing a central role in histone code. Preferentially demethylates trimethylated H3 'Lys-4' (H3K4me<sub>3</sub>) and monomethylated H3 'Lys-4' (H3K4me<sub>1</sub>) residues, while it has weaker activity for dimethylated H3 'Lys-36' (H3K36me<sub>2</sub>). Also catalyzes the hydroxylation of 60S ribosomal protein L8 on 'His-216'. Acts as a regulator of osteoblast differentiation via its interaction with SP7/OSX by demethylating H3K4me and H3K36me, thereby inhibiting SP7/OSX-mediated promoter activation (By similarity). May also play a role in ribosome biogenesis and in the replication or remodeling of certain heterochromatic region. Participates in MYC-induced transcriptional activation.

订购热线: 4008-898-798

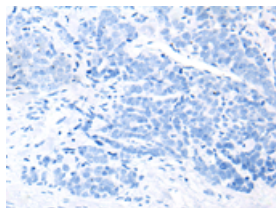
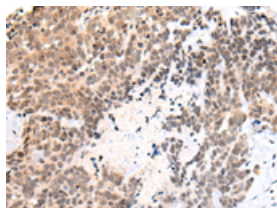
## Applications

### Immunohistochemistry

Predicted cell location: Nucleus

Positive control: Human thyroid cancer

Recommended dilution: 30-150

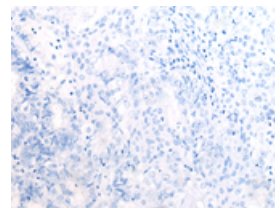
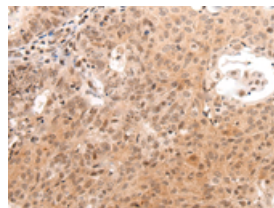


The image on the left is immunohistochemistry of paraffin-embedded Human thyroid cancer tissue using ml263324(C14orf169 Antibody) at dilution 1/45, on the right is treated with synthetic peptide. (Original magnification:  $\times 200$ )

Predicted cell location: Nucleus

Positive control: Human ovarian cancer

Recommended dilution: 30-150



The image on the left is immunohistochemistry of paraffin-embedded Human ovarian cancer tissue using ml263324(C14orf169 Antibody) at dilution 1/45, on the right is treated with synthetic peptide. (Original magnification:  $\times 200$ )

### ELISA

Recommended dilution: 5000-10000

联系电话: 4008-898-798, 021-61725725

联系QQ: 2881505695, 2881505696

邮箱: [mlbio\\_cn@yeah.net](mailto:mlbio_cn@yeah.net)

网址: [www.mlbio.cn](http://www.mlbio.cn)