

Anti-CACNA1B antibody

Cat. No.	ml263355
Package	25 µl/100 µl/200 µl
Storage	-20°C, pH7.4 PBS, 0.05% NaN ₃ , 40% Glycerol

Product overview

Description	Anti-CACNA1B rabbit polyclonal antibody
Applications	ELISA, IHC
Immunogen	Synthetic peptide of human CACNA1B
Reactivity	Human, Mouse, Rat
Content	0.2 mg/ml
Host species	Rabbit
Ig class	Immunogen-specific rabbit IgG
Purification	Antigen affinity purification

Target information

Symbol	CACNA1B
Full name	calcium voltage-gated channel subunit alpha1 B
Synonyms	BIII; CACNN; DYT23; Cav2.2; CACNL1A5
Swissprot	Q00975

Target Background

The protein encoded by this gene is the pore-forming subunit of an N-type voltage-dependent calcium channel, which controls neurotransmitter release from neurons. The encoded protein forms a complex with alpha-2, beta, and delta subunits to form the high-voltage activated channel. This channel is sensitive to omega-conotoxin-GVIA and omega-agatoxin-IIIa but insensitive to dihydropyridines. Two transcript variants encoding different isoforms have been found for this gene.

订购热线: 4008-898-798

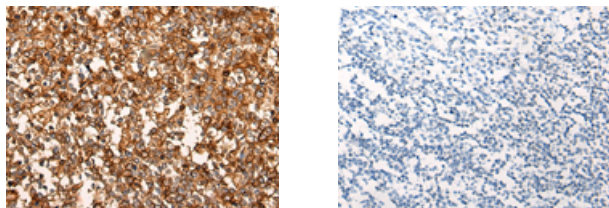
Applications

Immunohistochemistry

Predicted cell location: Cytoplasm

Positive control: Human tonsil

Recommended dilution: 25-100



The image on the left is immunohistochemistry of paraffin-embedded Human tonsil tissue using ml263355(CACNA1B Antibody) at dilution 1/25, on the right is treated with synthetic peptide. (Original magnification: $\times 200$)

ELISA

Recommended dilution: 5000-10000

联系电话: 4008-898-798, 021-61725725

联系QQ: 2881505695, 2881505696

邮箱: mlbio_cn@yeah.net

网址: www.mlbio.cn