

Anti-CDC14B antibody

Cat. No.	ml263410
Package	25 µl/100 µl/200 µl
Storage	-20°C, pH7.4 PBS, 0.05% NaN ₃ , 40% Glycerol

Product overview

Description	Anti-CDC14B rabbit polyclonal antibody
Applications	ELISA, IHC
Immunogen	Synthetic peptide of human CDC14B
Reactivity	Human
Content	0.4 mg/ml
Host species	Rabbit
Ig class	Immunogen-specific rabbit IgG
Purification	Antigen affinity purification

Target information

Symbol	CDC14B
Full name	cell division cycle 14B
Synonyms	CDC14B3; Cdc14B1; Cdc14B2; hCDC14B
Swissprot	O60729

Target Background

The protein encoded by this gene is a member of the dual specificity protein tyrosine phosphatase family. This protein is highly similar to *Saccharomyces cerevisiae* Cdc14, a protein tyrosine phosphatase involved in the exit of cell mitosis and initiation of DNA replication, which suggests the role in cell cycle control. This protein has been shown to interact with and dephosphorylates tumor suppressor protein p53, and is thought to regulate the function of p53. Alternative splice of this gene results in 3 transcript variants encoding distinct isoforms.

订购热线: 4008-898-798

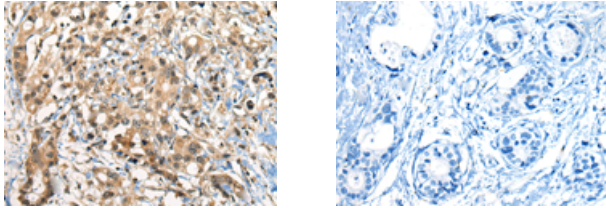
Applications

Immunohistochemistry

Predicted cell location: Nucleus

Positive control: Human gastric cancer

Recommended dilution: 20-100



The image on the left is immunohistochemistry of paraffin-embedded Human gastric cancer tissue using ml263410(CDC14B Antibody) at dilution 1/20, on the right is treated with synthetic peptide. (Original magnification: $\times 200$)

ELISA

Recommended dilution: 5000-10000

联系电话: 4008-898-798, 021-61725725

联系QQ: 2881505695, 2881505696

邮箱: mlbio_cn@yeah.net

网址: www.mlbio.cn