

Anti-OTUD7B antibody

Cat. No.	ml263441
Package	25 µl/100 µl/200 µl
Storage	-20°C, pH7.4 PBS, 0.05% NaN ₃ , 40% Glycerol

Product overview

Description	Anti-OTUD7B rabbit polyclonal antibody
Applications	ELISA, IHC
Immunogen	Synthetic peptide of human OTUD7B
Reactivity	Human, Mouse
Content	0.8 mg/ml
Host species	Rabbit
Ig class	Immunogen-specific rabbit IgG
Purification	Antigen affinity purification

Target information

Symbol	OTUD7B
Full name	OTU deubiquitinase 7B
Synonyms	ZA20D1; CEZANNE
Swissprot	Q6GQQ9

Target Background

OTUD7B (OTU domain-containing protein 7B), also known as ZA20D1 or Cezanne, is an 843 amino acid protein that localizes to both the nucleus and the cytoplasm. Expressed in a variety of tissues, including liver, kidney, heart and immature B-cells, OTUD7B functions to hydrolyze branched and linear forms of polyubiquitin, specifically deubiquinating Lys-48- and Lys-63-linked polyubiquitin chains. Via its ability to deubiquinate target proteins, OTUD7B regulates the inflammatory response within the cell and may play a role in cell survival. More specifically, OTUD7B forms a negative feedback loop in pro-inflammatory signaling, thereby suppressing NF- κ B activity and helping to resolve inflammatory responses. OTUD7B contains one C-terminal A20-type zinc finger, one OTU domain and one N-terminal TRAF-binding domain through which it conveys its deubiquitinating activity.

订购热线: 4008-898-798

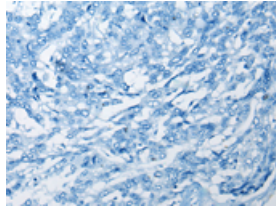
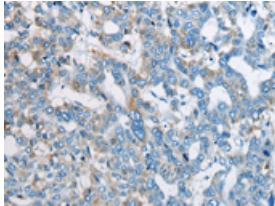
Applications

Immunohistochemistry

Predicted cell location: Cytoplasm

Positive control: Human liver cancer

Recommended dilution: 20-100

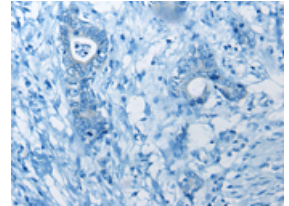
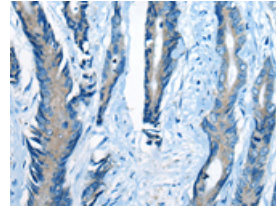


The image on the left is immunohistochemistry of paraffin-embedded Human liver cancer tissue using ml263441(OTUD7B Antibody) at dilution 1/40, on the right is treated with synthetic peptide. (Original magnification: $\times 200$)

Predicted cell location: Cytoplasm

Positive control: Human gastric cancer

Recommended dilution: 20-100



The image on the left is immunohistochemistry of paraffin-embedded Human gastric cancer tissue using ml263441(OTUD7B Antibody) at dilution 1/40, on the right is treated with synthetic peptide. (Original magnification: $\times 200$)

ELISA

Recommended dilution: 5000-10000

联系电话: 4008-898-798, 021-61725725

联系QQ: 2881505695, 2881505696

邮箱: mlbio_cn@yeah.net

网址: www.mlbio.cn