

## Anti-CHADL antibody

<b>Cat. No.</b>	ml263443
<b>Package</b>	25 µl/100 µl/200 µl
<b>Storage</b>	-20°C, pH7.4 PBS, 0.05% NaN <sub>3</sub> , 40% Glycerol

### Product overview

<b>Description</b>	Anti-CHADL rabbit polyclonal antibody
<b>Applications</b>	ELISA, IHC
<b>Immunogen</b>	Synthetic peptide of human CHADL
<b>Reactivity</b>	Human
<b>Content</b>	0.6 mg/ml
<b>Host species</b>	Rabbit
<b>Ig class</b>	Immunogen-specific rabbit IgG
<b>Purification</b>	Antigen affinity purification

### Target information

<b>Symbol</b>	CHADL
<b>Full name</b>	chondroadherin like
<b>Synonyms</b>	SLRR4B
<b>Swissprot</b>	Q6NUI6

### Target Background

Members of the small leucine-rich proteoglycan (SLRP) family are mostly extracellular proteins that function upstream of multiple signaling cascades. They affect intracellular phosphorylation and modulate distinct pathways, such as those driven by Toll-like receptors, TGF $\beta$  and receptor tyrosine kinases. As a member of the SLRP family, CHADL (Chondroadherin-like protein) is a 762 amino acid protein containing 21 LRR (leucine-rich) repeats, which promote protein-ligand interactions. Chondroadherin, a closely related protein, promotes attachment of chondrocytes, osteoblasts and fibroblasts and also plays an important role in the regulation of chondrocyte proliferation and growth. CHADL is a secreted protein that is located in the extracellular space. There are two isoforms of CHADL that exist as a result of alternative splicing events. Potential negative modulator of chondrocyte differentiation. Inhibits collagen fibrillogenesis in vitro. May influence chondrocyte's differentiation by acting on its cellular collagenous microenvironment.

订购热线: 4008-898-798

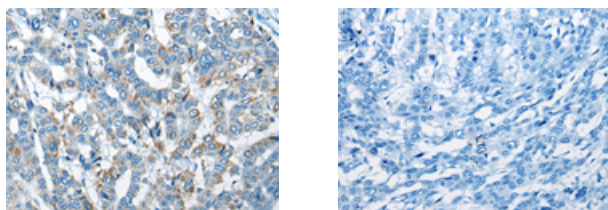
#### Applications

##### Immunohistochemistry

Predicted cell location: Cytoplasm

Positive control: Human liver cancer

Recommended dilution: 10-50



The image on the left is immunohistochemistry of paraffin-embedded Human liver cancer tissue using ml263443(CHADL Antibody) at dilution 1/30, on the right is treated with synthetic peptide. (Original magnification:  $\times 200$ )

##### ELISA

Recommended dilution: 5000-10000

联系电话: 4008-898-798, 021-61725725

联系QQ: 2881505695, 2881505696

邮箱: [mlbio\\_cn@yeah.net](mailto:mlbio_cn@yeah.net)

网址: [www.mlbio.cn](http://www.mlbio.cn)