

Anti-CHURC1 antibody

Cat. No.	ml263461
Package	25 µl/100 µl/200 µl
Storage	-20°C, pH7.4 PBS, 0.05% NaN ₃ , 40% Glycerol

Product overview

Description	Anti-CHURC1 rabbit polyclonal antibody
Applications	ELISA, IHC
Immunogen	Synthetic peptide of human CHURC1
Reactivity	Human, Mouse
Content	0.6 mg/ml
Host species	Rabbit
Ig class	Immunogen-specific rabbit IgG
Purification	Antigen affinity purification

Target information

Symbol	CHURC1
Full name	churchill domain containing 1
Synonyms	chch; My015; C14orf52
Swissprot	Q8WUH1

Target Background

CHURC1, also known as protein Churchill, is a 112 amino acid protein that plays a critical role in neural induction during embryogenesis. The fibroblast growth family of proteins (FGFs) has been identified as necessary factors in mesoderm formation and neural induction. CHURC1, a putative zinc finger protein, is a transcriptional activator that mediates FGF signaling. Furthermore, CHURC1 is thought to play a role in the regulation of cell movement. Although CHURC1 does not bind to DNA, it functions as a transcriptional regulator and a protein-interaction factor. Two isoforms of CHURC1 exist as a result of alternative splicing events.

订购热线: 4008-898-798

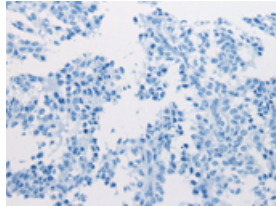
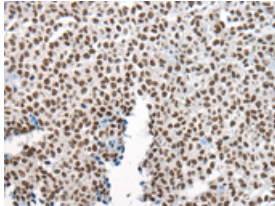
Applications

Immunohistochemistry

Predicted cell location: Nucleus

Positive control: Human ovarian cancer

Recommended dilution: 25-100

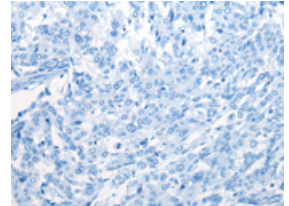
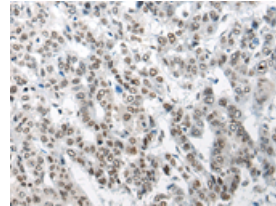


The image on the left is immunohistochemistry of paraffin-embedded Human ovarian cancer tissue using ml263461(CHURC1 Antibody) at dilution 1/25, on the right is treated with synthetic peptide. (Original magnification: $\times 200$)

Predicted cell location: Nucleus

Positive control: Human liver cancer

Recommended dilution: 25-100



The image on the left is immunohistochemistry of paraffin-embedded Human liver cancer tissue using ml263461(CHURC1 Antibody) at dilution 1/25, on the right is treated with synthetic peptide. (Original magnification: $\times 200$)

ELISA

Recommended dilution: 5000-10000

联系电话: 4008-898-798, 021-61725725

联系QQ: 2881505695, 2881505696

邮箱: mlbio_cn@yeah.net

网址: www.mlbio.cn