

## Anti-PMP22 antibody

|                 |   |
|-----------------|---|
| <b>Cat. No.</b> | ml263518  |
| <b>Package</b>  | 25 µl/100 µl/200 µl                                     |
| <b>Storage</b>  | -20°C, pH7.4 PBS, 0.05% NaN <sub>3</sub> , 40% Glycerol |

### Product overview

|                     |                                       |
|---------------------|---------------------------------------|
| <b>Description</b>  | Anti-PMP22 rabbit polyclonal antibody |
| <b>Applications</b> | ELISA, IHC                            |
| <b>Immunogen</b>    | Synthetic peptide of human PMP22      |
| <b>Reactivity</b>   | Human                                 |
| <b>Content</b>      | 0.5 mg/ml                             |
| <b>Host species</b> | Rabbit                                |
| <b>Ig class</b>     | Immunogen-specific rabbit IgG         |
| <b>Purification</b> | Antigen affinity purification         |

### Target information

|                  |   |
|------------------|---|
| <b>Symbol</b>    | PMP22   |
| <b>Full name</b> | peripheral myelin protein 22                        |
| <b>Synonyms</b>  | DSS; GAS3; HNPP; CMT1A; CMT1E; GAS-3; Sp110; HMSNIA |
| <b>Swissprot</b> | Q01453  |

### Target Background

This gene encodes an integral membrane protein that is a major component of myelin in the peripheral nervous system. Studies suggest two alternately used promoters drive tissue-specific expression. Various mutations of this gene are causes of Charcot-Marie-Tooth disease Type 1A, Dejerine-Sottas syndrome, and hereditary neuropathy with liability to pressure palsies. Alternative splicing results in multiple transcript variants.

订购热线: 4008-898-798

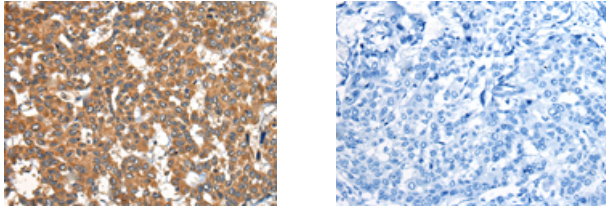
#### Applications

##### Immunohistochemistry

Predicted cell location: Cell membrane

Positive control: Human liver cancer

Recommended dilution: 25-100



The image on the left is immunohistochemistry of paraffin-embedded Human liver cancer tissue using ml263518(PMP22 Antibody) at dilution 1/20, on the right is treated with synthetic peptide. (Original magnification:  $\times 200$ )

##### ELISA

Recommended dilution: 5000-10000

联系电话: 4008-898-798, 021-61725725

联系QQ: 2881505695, 2881505696

邮箱: [mlbio\\_cn@yeah.net](mailto:mlbio_cn@yeah.net)

网址: [www.mlbio.cn](http://www.mlbio.cn)