

## Anti-SP7 antibody

|                 |   |
|-----------------|---|
| <b>Cat. No.</b> | ml263596  |
| <b>Package</b>  | 25 µl/100 µl/200 µl                                     |
| <b>Storage</b>  | -20°C, pH7.4 PBS, 0.05% NaN <sub>3</sub> , 40% Glycerol |

### Product overview

|                     |                                     |
|---------------------|-------------------------------------|
| <b>Description</b>  | Anti-SP7 rabbit polyclonal antibody |
| <b>Applications</b> | ELISA, IHC                          |
| <b>Immunogen</b>    | Synthetic peptide of human SP7      |
| <b>Reactivity</b>   | Human, Mouse                        |
| <b>Content</b>      | 1.4 mg/ml                           |
| <b>Host species</b> | Rabbit                              |
| <b>Ig class</b>     | Immunogen-specific rabbit IgG       |
| <b>Purification</b> | Antigen affinity purification       |

### Target information

|                  |                          |
|------------------|--------------------------|
| <b>Symbol</b>    | SP7                      |
| <b>Full name</b> | Sp7 transcription factor |
| <b>Synonyms</b>  | OSX; OI11; OI12; osterix |
| <b>Swissprot</b> | Q8TDD2                   |

### Target Background

This gene encodes a member of the Sp subfamily of Sp/XKLF transcription factors. Sp family proteins are sequence-specific DNA-binding proteins characterized by an amino-terminal trans-activation domain and three carboxy-terminal zinc finger motifs. This protein is a bone specific transcription factor and is required for osteoblast differentiation and bone formation.

订购热线: 4008-898-798

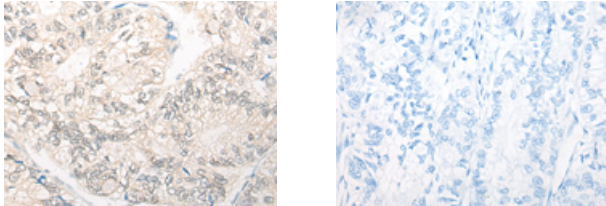
#### Applications

##### Immunohistochemistry

Predicted cell location: Nucleus

Positive control: Human gastric cancer

Recommended dilution: 20-100



The image on the left is immunohistochemistry of paraffin-embedded Human gastric cancer tissue using ml263596(SP7 Antibody) at dilution 1/25, on the right is treated with synthetic peptide. (Original magnification:  $\times 200$ )

##### ELISA

Recommended dilution: 5000-10000

联系电话: 4008-898-798, 021-61725725

联系QQ: 2881505695, 2881505696

邮箱: [mlbio\\_cn@yeah.net](mailto:mlbio_cn@yeah.net)

网址: [www.mlbio.cn](http://www.mlbio.cn)