

Anti-CCP110 antibody

Cat. No.	ml263637
Package	25 µl/100 µl/200 µl
Storage	-20°C, pH7.4 PBS, 0.05% NaN ₃ , 40% Glycerol

Product overview

Description	Anti-CCP110 rabbit polyclonal antibody
Applications	ELISA, IHC
Immunogen	Synthetic peptide of human CCP110
Reactivity	Human, Mouse
Content	0.6 mg/ml
Host species	Rabbit
Ig class	Immunogen-specific rabbit IgG
Purification	Antigen affinity purification

Target information

Symbol	CCP110
Full name	centriolar coiled-coil protein 110
Synonyms	CP110; Cep110
Swissprot	O43303

Target Background

Necessary for centrosome duplication at different stages of procentriole formation. Acts as a key negative regulator of ciliogenesis in collaboration with CEP97 by capping the mother centriole thereby preventing cilia formation (PubMed:17719545 PubMed:17681131, PubMed:23486064). Also involved in promoting ciliogenesis. May play a role in the assembly of the mother centriole subdistal appendages (SDA) thereby effecting the fusion of recycling endosomes to basal bodies during cilia formation (By similarity). Required for correct spindle formation and has a role in regulating cytokinesis and genome stability via cooperation with CALM1 and CETN2 (PubMed:16760425).

订购热线: 4008-898-798

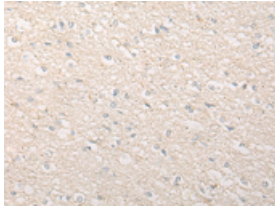
Applications

Immunohistochemistry

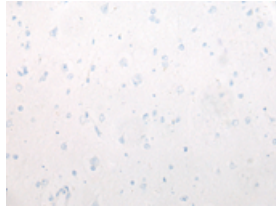
Predicted cell location: Cytoplasm

Positive control: Human brain

Recommended dilution: 20-100



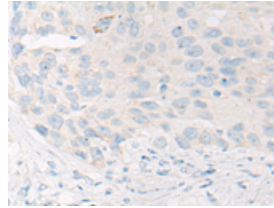
The image on the left is immunohistochemistry of paraffin-embedded Human brain tissue using ml263637(CCP110 Antibody) at dilution 1/20, on the right is treated with synthetic peptide. (Original magnification: $\times 200$)



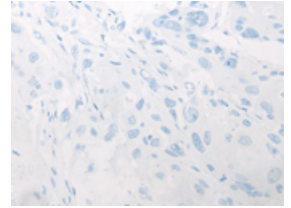
Predicted cell location: Cytoplasm

Positive control: Human esophagus cancer

Recommended dilution: 20-100



The image on the left is immunohistochemistry of paraffin-embedded Human esophagus cancer tissue using ml263637(CCP110 Antibody) at dilution 1/20, on the right is treated with synthetic peptide. (Original magnification: $\times 200$)



ELISA

Recommended dilution: 5000-10000

联系电话: 4008-898-798, 021-61725725

联系QQ: 2881505695, 2881505696

邮箱: mlbio_cn@yeah.net

网址: www.mlbio.cn