

Anti-CR1L antibody

Cat. No.	ml263643
Package	25 µl/100 µl/200 µl
Storage	-20°C, pH7.4 PBS, 0.05% NaN ₃ , 40% Glycerol

Product overview

Description	Anti-CR1L rabbit polyclonal antibody
Applications	ELISA, IHC
Immunogen	Synthetic peptide of human CR1L
Reactivity	Human
Content	1.2 mg/ml
Host species	Rabbit
Ig class	Immunogen-specific rabbit IgG
Purification	Antigen affinity purification

Target information

Symbol	CR1L
Full name	complement C3b/C4b receptor 1 like
Synonyms	
Swissprot	Q2VPA4

Target Background

The C3b/C4b receptor (CR1; 120620) is important in immune complex processing. On phagocytic cells it promotes the adherence and sometimes the endocytosis of C3b- and C4b-coated particles. CR1 is composed largely of a tandemly repeated motif of approximately 60 amino acids, the short consensus repeat (SCR).

订购热线: 4008-898-798

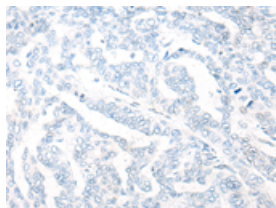
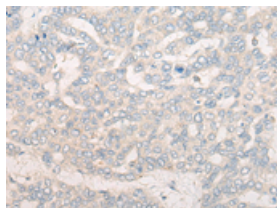
Applications

Immunohistochemistry

Predicted cell location: Cytoplasm and Cell membrane

Positive control: Human liver cancer

Recommended dilution: 20-100

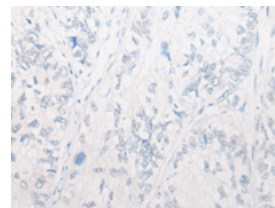
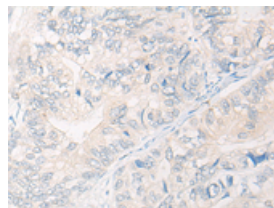


The image on the left is immunohistochemistry of paraffin-embedded Human liver cancer tissue using ml263643(CR1L Antibody) at dilution 1/20, on the right is treated with synthetic peptide. (Original magnification: $\times 200$)

Predicted cell location: Cytoplasm and Cell membrane

Positive control: Human gastric cancer

Recommended dilution: 20-100



The image on the left is immunohistochemistry of paraffin-embedded Human gastric cancer tissue using ml263643(CR1L Antibody) at dilution 1/20, on the right is treated with synthetic peptide. (Original magnification: $\times 200$)

ELISA

Recommended dilution: 5000-10000

联系电话: 4008-898-798, 021-61725725

联系QQ: 2881505695, 2881505696

邮箱: mlbio_cn@yeah.net

网址: www.mlbio.cn