

Anti-UQCR10 antibody

Cat. No.	ml263661
Package	25 µl/100 µl/200 µl
Storage	-20°C, pH7.4 PBS, 0.05% NaN ₃ , 40% Glycerol

Product overview

Description	Anti-UQCR10 rabbit polyclonal antibody
Applications	ELISA, IHC
Immunogen	Synthetic peptide of human UQCR10
Reactivity	Human, Mouse
Content	0.8 mg/ml
Host species	Rabbit
Ig class	Immunogen-specific rabbit IgG
Purification	Antigen affinity purification

Target information

Symbol	UQCR10
Full name	ubiquinol-cytochrome c reductase, complex III subunit X
Synonyms	QCR9; UCRC; HSPC051; HSPC119; HSPC151; UCCR7.2
Swissprot	Q9UDW1

Target Background

UCRC is a subunit of mitochondrial complex III (ubiquinol-cytochrome c reductase; EC 1.10.2.2), which forms the middle segment of the respiratory chain of the inner mitochondrial membrane (Schagger et al., 1995 [PubMed 8592474]).

订购热线: 4008-898-798

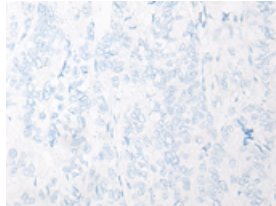
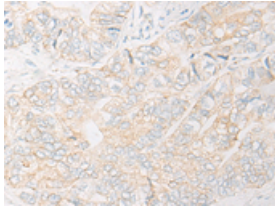
Applications

Immunohistochemistry

Predicted cell location: Mitochondrion inner membrane

Positive control: Human gastric cancer

Recommended dilution: 20-100

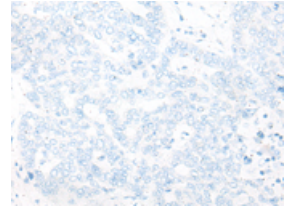
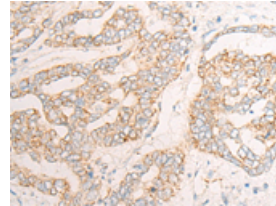


The image on the left is immunohistochemistry of paraffin-embedded Human gastric cancer tissue using ml263661(UQCR10 Antibody) at dilution 1/30, on the right is treated with synthetic peptide. (Original magnification: $\times 200$)

Predicted cell location: Mitochondrion inner membrane

Positive control: Human liver cancer

Recommended dilution: 20-100



The image on the left is immunohistochemistry of paraffin-embedded Human liver cancer tissue using ml263661(UQCR10 Antibody) at dilution 1/30, on the right is treated with synthetic peptide. (Original magnification: $\times 200$)

ELISA

Recommended dilution: 5000-10000

联系电话: 4008-898-798, 021-61725725

联系QQ: 2881505695, 2881505696

邮箱: mlbio_cn@yeah.net

网址: www.mlbio.cn