

Anti-KRT9 antibody

Cat. No.	ml263665
Package	25 µl/100 µl/200 µl
Storage	-20°C, pH7.4 PBS, 0.05% NaN ₃ , 40% Glycerol

Product overview

Description	Anti-KRT9 rabbit polyclonal antibody
Applications	ELISA, IHC
Immunogen	Synthetic peptide of human KRT9
Reactivity	Human
Content	0.7 mg/ml
Host species	Rabbit
Ig class	Immunogen-specific rabbit IgG
Purification	Antigen affinity purification

Target information

Symbol	KRT9
Full name	keratin 9
Synonyms	K9; CK-9; EPPK
Swissprot	P35527

Target Background

This gene encodes the type I keratin 9, an intermediate filament chain expressed only in the terminally differentiated epidermis of palms and soles. Mutations in this gene cause epidermolytic palmoplantar keratoderma.

订购热线: 4008-898-798

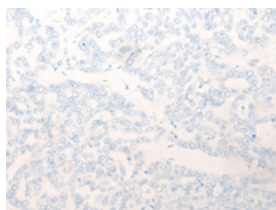
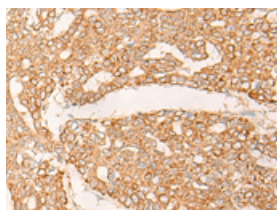
Applications

Immunohistochemistry

Predicted cell location: Cytoplasm

Positive control: Human liver cancer

Recommended dilution: 30-150

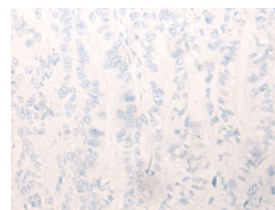
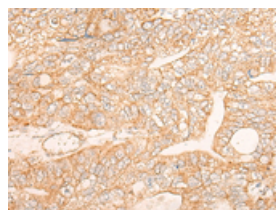


The image on the left is immunohistochemistry of paraffin-embedded Human liver cancer tissue using ml263665(KRT9 Antibody) at dilution 1/30, on the right is treated with synthetic peptide. (Original magnification: $\times 200$)

Predicted cell location: Cytoplasm

Positive control: Human gastric cancer

Recommended dilution: 30-150



The image on the left is immunohistochemistry of paraffin-embedded Human gastric cancer tissue using ml263665(KRT9 Antibody) at dilution 1/30, on the right is treated with synthetic peptide. (Original magnification: $\times 200$)

ELISA

Recommended dilution: 5000-10000

联系电话: 4008-898-798, 021-61725725

联系QQ: 2881505695, 2881505696

邮箱: mlbio_cn@yeah.net

网址: www.mlbio.cn