

Anti-DCAF13 antibody

Cat. No.	ml263675
Package	25 µl/100 µl/200 µl
Storage	-20°C, pH7.4 PBS, 0.05% NaN ₃ , 40% Glycerol

Product overview

Description	Anti-DCAF13 rabbit polyclonal antibody
Applications	ELISA, IHC
Immunogen	Synthetic peptide of human DCAF13
Reactivity	Human, Mouse
Content	0.72 mg/ml
Host species	Rabbit
Ig class	Immunogen-specific rabbit IgG
Purification	Antigen affinity purification

Target information

Symbol	DCAF13
Full name	DDB1 and CUL4 associated factor 13
Synonyms	GM83; WDSOF1; HSPC064
Swissprot	Q9NV06

Target Background

Possible role in ribosomal RNA processing (By similarity). May function as a substrate receptor for CUL4-DDB1 E3 ubiquitin-protein ligase complex.

订购热线: 4008-898-798

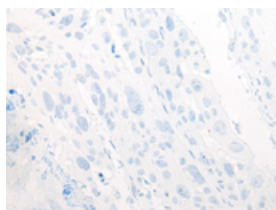
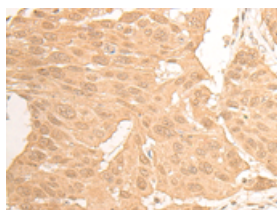
Applications

Immunohistochemistry

Predicted cell location: Cytoplasm and Nucleus

Positive control: Human esophagus cancer

Recommended dilution: 25-100

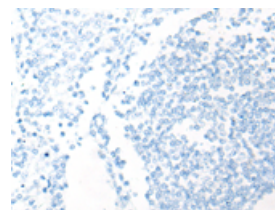
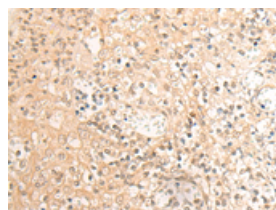


The image on the left is immunohistochemistry of paraffin-embedded Human esophagus cancer tissue using ml263675(DCAF13 Antibody) at dilution 1/20, on the right is treated with synthetic peptide. (Original magnification: $\times 200$)

Predicted cell location: Cytoplasm and Nucleus

Positive control: Human tonsil

Recommended dilution: 25-100



The image on the left is immunohistochemistry of paraffin-embedded Human tonsil tissue using ml263675(DCAF13 Antibody) at dilution 1/20, on the right is treated with synthetic peptide. (Original magnification: $\times 200$)

ELISA

Recommended dilution: 5000-10000

联系电话: 4008-898-798, 021-61725725

联系QQ: 2881505695, 2881505696

邮箱: mlbio_cn@yeah.net

网址: www.mlbio.cn