

Anti-SLC28A2 antibody

Cat. No.	ml263690
Package	25 µl/100 µl/200 µl
Storage	-20°C, pH7.4 PBS, 0.05% NaN ₃ , 40% Glycerol

Product overview

Description	Anti-SLC28A2 rabbit polyclonal antibody
Applications	ELISA, IHC
Immunogen	Synthetic peptide of human SLC28A2
Reactivity	Human, Mouse, Rat
Content	0.78 mg/ml
Host species	Rabbit
Ig class	Immunogen-specific rabbit IgG
Purification	Antigen affinity purification

Target information

Symbol	SLC28A2
Full name	solute carrier family 28 member 2
Synonyms	CNT2; HCNT2; SPNT1; HsT17153
Swissprot	O43868

Target Background

Sodium-dependent and purine-selective transporter. Exhibits the transport characteristics of the nucleoside transport system cif or N1 subtype (N1/cif) (selective for purine nucleosides and uridine). Plays a critical role in specific uptake and salvage of purine nucleosides in kidney and other tissues.

订购热线: 4008-898-798

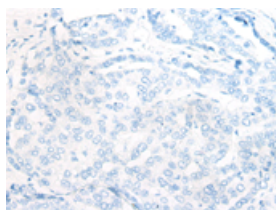
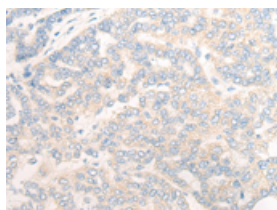
Applications

Immunohistochemistry

Predicted cell location: Cell membrane and Cytoplasm

Positive control: Human liver cancer

Recommended dilution: 20-100

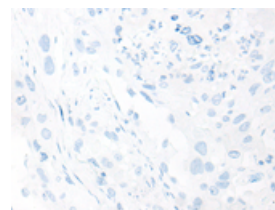
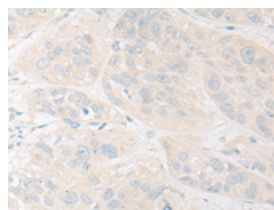


The image on the left is immunohistochemistry of paraffin-embedded Human liver cancer tissue using ml263690(SLC28A2 Antibody) at dilution 1/20, on the right is treated with synthetic peptide. (Original magnification: ×200)

Predicted cell location: Cell membrane and Cytoplasm

Positive control: Human esophagus cancer

Recommended dilution: 20-100



The image on the left is immunohistochemistry of paraffin-embedded Human esophagus cancer tissue using ml263690(SLC28A2 Antibody) at dilution 1/20, on the right is treated with synthetic peptide. (Original magnification: ×200)

ELISA

Recommended dilution: 5000-10000

联系电话: 4008-898-798, 021-61725725

联系QQ: 2881505695, 2881505696

邮箱: mlbio_cn@yeah.net

网址: www.mlbio.cn